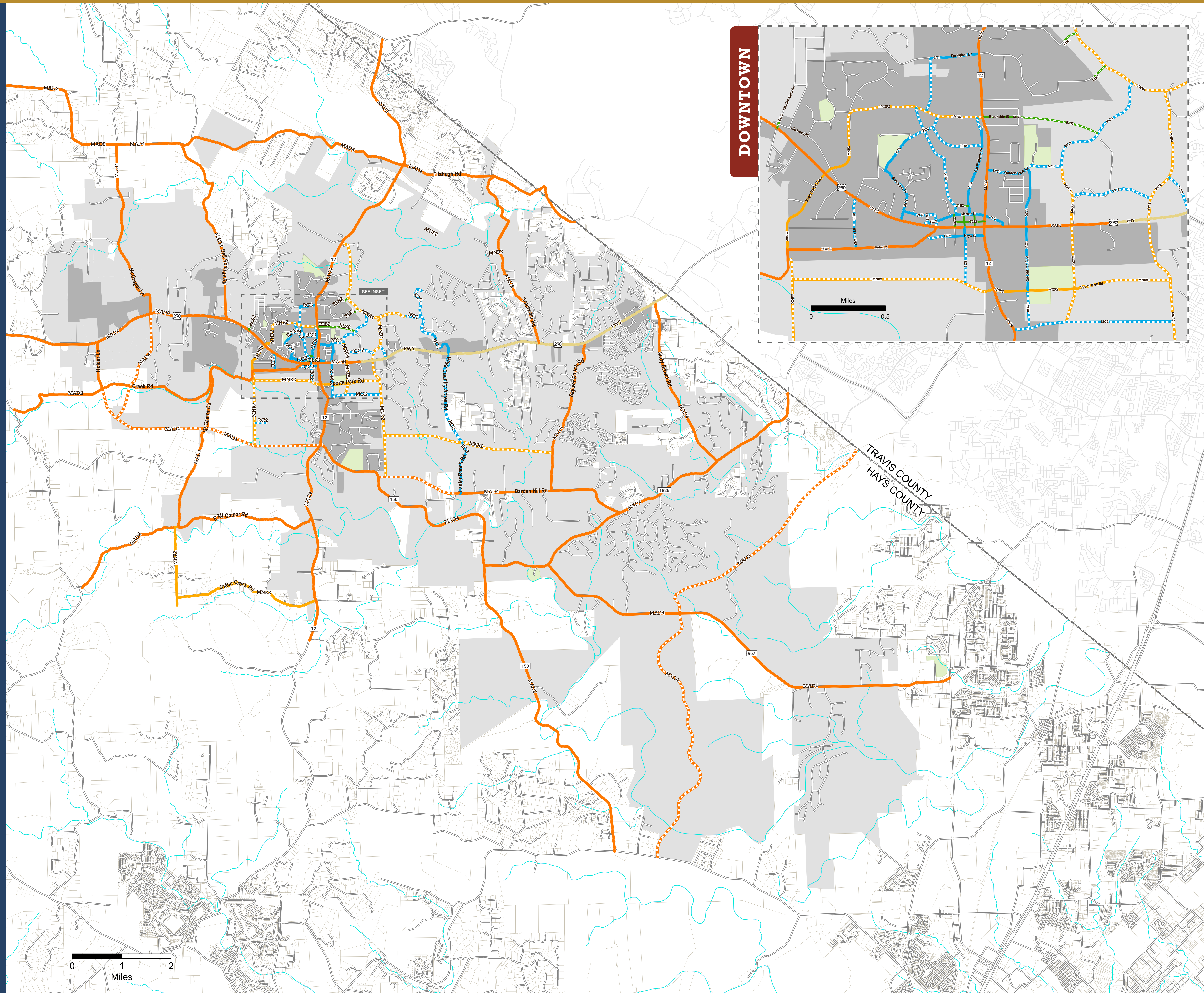


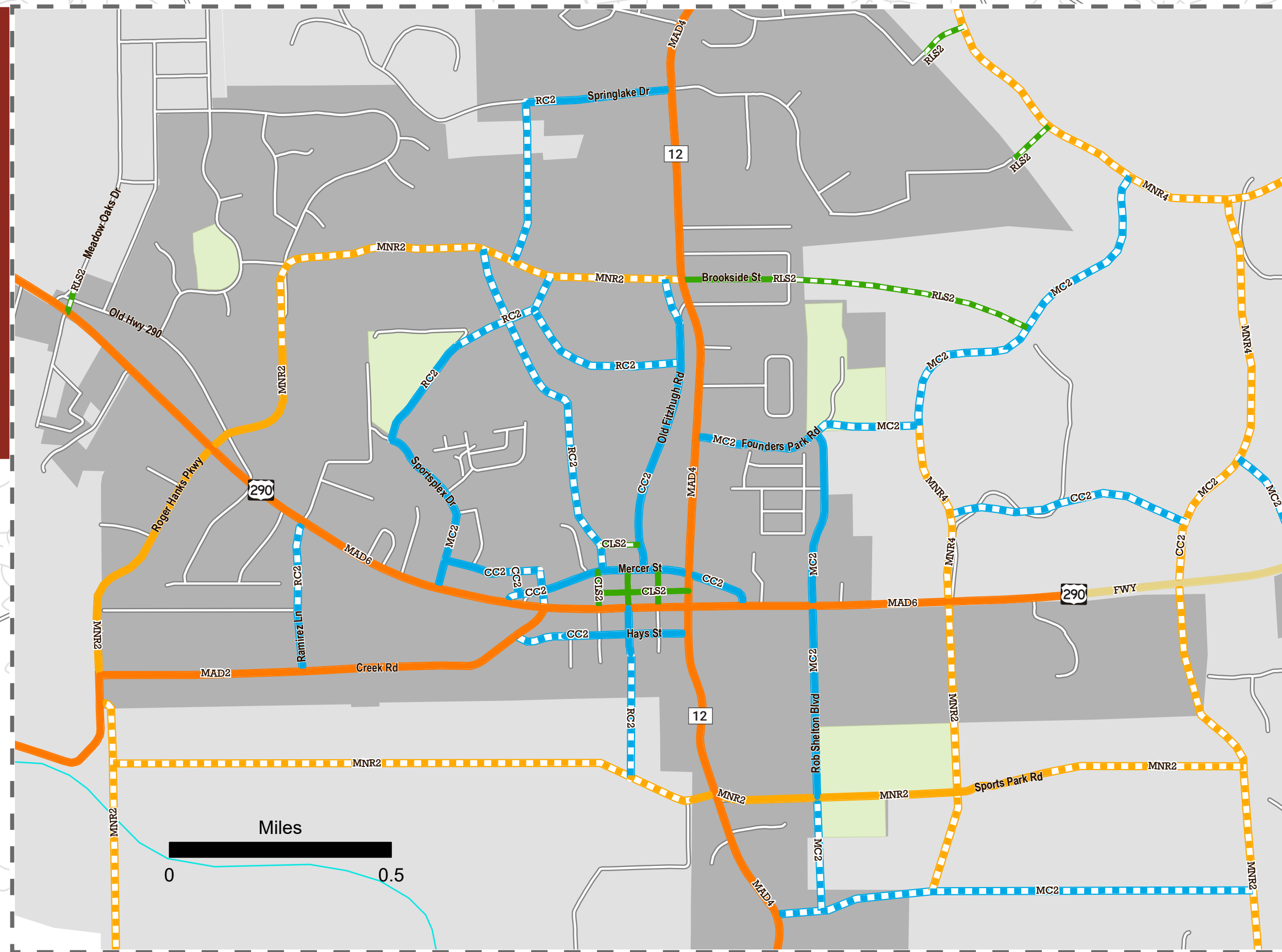
# THOROUGHFARE PLAN



DRIPPING SPRINGS  
Texas



DOWNTOWN



## LEGEND

### THOROUGHFARE PLAN

MAJOR ARTERIAL	MINOR ARTERIAL
Enhanced	Enhanced
Proposed	Proposed
COLLECTOR	STREET
Enhanced	Enhanced
Proposed	Proposed
FREEWAY	
Enhanced*	

### ROADWAY CLASSIFICATIONS

MAD6 - 6 Lane Major Divided Arterial
MAD4 - 4 Lane Major Divided Arterial
MAD2 - 2 Lane Major Divided Arterial
MNR4 - 4 Lane Minor Divided Arterial
MNR2 - 2 Lane Minor Divided Arterial
MC2 - 2 Lane Major Collector
CC2 - 2 Lane Commercial Collector
NC2 - 2 Lane Neighborhood Collector
RC2 - 2 Lane Residential Collector
CLS2 - 2 Lane Commercial Local Street
RLS2 - 2 Lane Residential Local Street

### OTHER

CITY LIMITS
EXTRATERRITORIAL JURISDICTION (ETJ)
PARKS
CREEKS & RIVERS
COUNTY BOUNDARY



October 2021

This Thoroughfare Plan depicts proposed enhancements to existing roadways and proposed roadways.

Final alignments of proposed roadways will be determined in cooperation with TxDOT, Hays County and its Long Range Transportation Plan, and the subdivision platting process.

\* US 290 classification and roadway cross-section to be determined by TxDOT as part of US 290 Corridor Study.



504 Lavaca Street, Suite 900, Austin, TX 78701  
512-904-3700 | www.hdrinc.com



# MULTIMODAL PLAN



DRIPPING SPRINGS  
Texas

## LEGEND

### MULTIMODAL PLAN

#### SHARED-USE PATH

- Enhanced
- Proposed

#### SIDEWALK

- Enhanced
- Proposed

#### SIDEWALK WITH RAISED BICYCLE LANE

- Enhanced
- Proposed

#### EXISTING SIDEWALKS

- EXISTING SIDEWALKS
- EXISTING TRAILS

#### OTHER

- CITY LIMITS
- EXTRATERRITORIAL JURISDICTION (ETJ)
- PARKS
- CREEKS & RIVERS
- COUNTY BOUNDARY



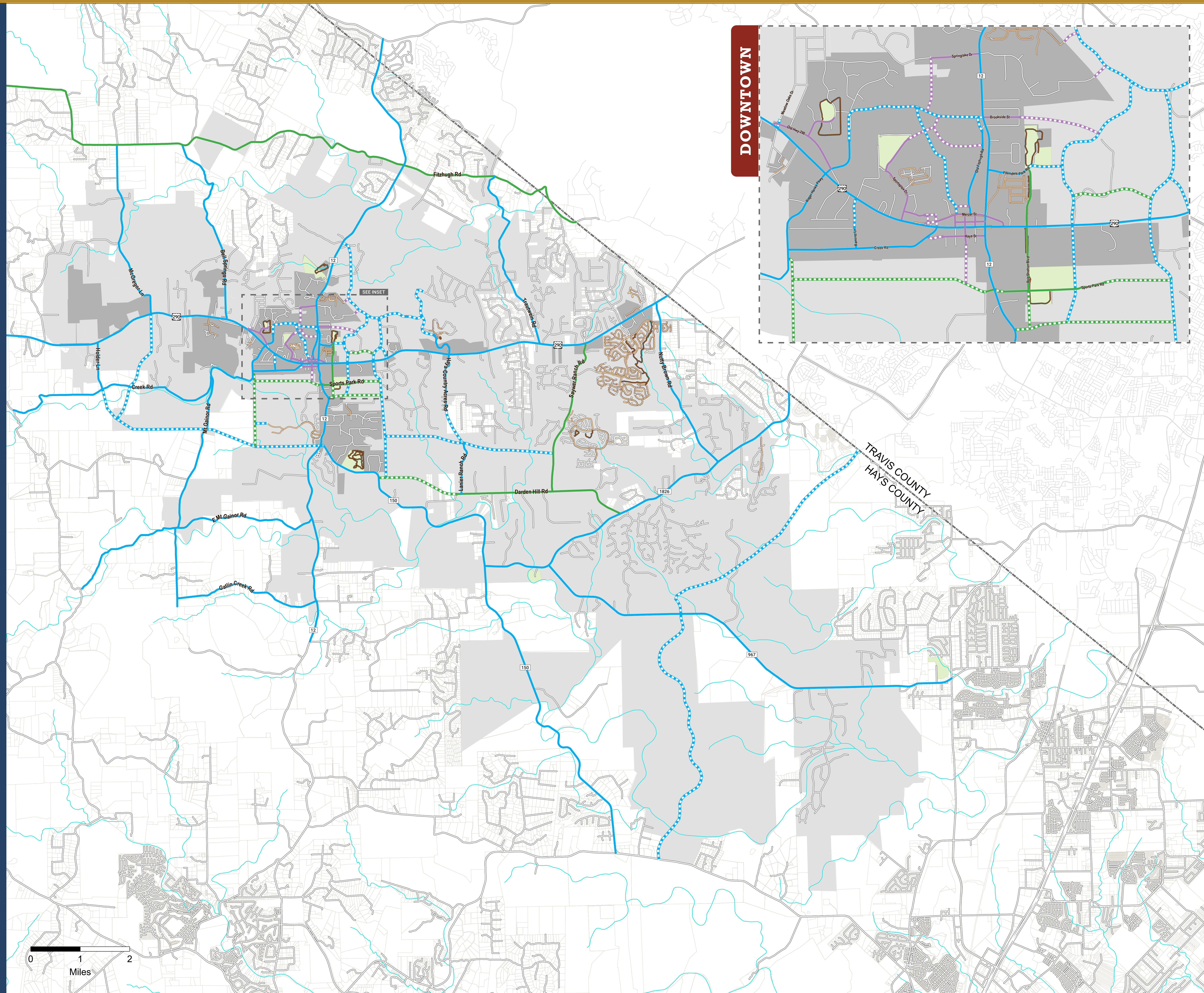
October 2021

This Multimodal Plan depicts proposed multimodal enhancements to existing roadways and proposed roadways. This Multimodal Plan does not preclude pedestrian and/or bicycle enhancements not indicated on this map.

Final alignments of proposed roadways will be determined in cooperation with TxDOT, Hays County and its Long Range Transportation Plan, and the subdivision platting process.



504 Lavaca Street, Suite 900, Austin, TX 78701  
512-904-3700 | [www.hdrinc.com](http://www.hdrinc.com)





# PRIORITIZATION PLAN



# DRIPPING SPRINGS

## Texas

## LEGEND

## PRIORITIZATION PLAN

SHORT-TERM

- Enhanced

MID-TERM

- Enhanced

Proposed

LONG-TERM

- Enhanced

Proposed

 EXISTING SIDEWALKS EXISTING TRAILS

## OTHER

CITY LIMITS

EXTRATERRITORIAL JURISDICTION (ETJ)

PARKS

— CREEKS & RIVERS

 COUNTY BOUNDARY

October 2021

This Prioritization Plan depicts the recommended project priority for enhancements to existing roadways and proposed roadways.

Final alignments of proposed roadways will be determined in cooperation with TxDOT, Hays County and its Long Range Transportation Plan, and the subdivision platting process.



504 Lavaca Street, Suite 900, Austin, TX 78701  
512-904-3700 | [www.hdrinc.com](http://www.hdrinc.com)