

CITY OF DRIPPING SPRINGS

PARKS, RECREATION & OPEN SPACE MASTER PLAN

2014-2024

March 10, 2015



CITY OF DRIPPING SPRINGS

RESOLUTION NO. 2015-30

**MASTER PLAN FOR
PARKS, RECREATION AND OPEN SPACE**

A RESOLUTION OF THE CITY OF DRIPPING SPRINGS,
TEXAS, RATIFYING AND ADOPTING THE MASTER
PLAN FOR PARKS, RECREATION AND OPEN SPACE
2014-2024 FOR THE CITY OF DRIPPING SPRINGS

WHEREAS, on March 10, 2015 the City Council approved and adopted the City of Dripping Springs Parks, Recreation and Open Space Master Plan 2014-2024; and

WHEREAS, it is industry standard to revise or rewrite a master plan approximately every ten years or when circumstances significantly change in order for the plan to reflect current issues and opportunities; and

WHEREAS, the Parks and Recreation Commission and the City Council held public hearings on the Parks, Recreation and Open Space Master Plan 2014-2024; and

WHEREAS, the Parks, Recreation and Open Space Master Plan 2014-2024 emphasizes core strategies for the Parks, Recreation and Open Space Department and delineates parks and recreation priorities; and

WHEREAS, the City Council finds the Parks, Recreation, and Open Space Master Plan 2014-2024 to be reasonable and prudent.

NOW, THEREFORE, BE IT RESOLVED by the City Council of the City of Dripping Springs, Texas, that:

1. The Parks, Recreation, and Open Space Master Plan 2014-2024 for the City of Dripping Springs, Texas is hereby officially ratified and adopted. Adoption of the Parks, Recreation and Open Space Master Plan 2014-2024 shall not commit the City of Dripping Springs to specific funding levels or implementation strategies, but shall provide a vision for Dripping Springs' parks, recreation and open space system, and direction for achieving desired levels of parks and recreation services.
2. The meeting at which this Resolution was passed was open to the public, and that public notice of the time, place and purpose of said meeting was given as required by the Open Meetings Act, Texas Government Code, Chapter 551.
3. **PASSED & APPROVED this, the 10th day of March 2015, by a vote of 3 (ayes) to 2 (nays) to 0 (abstentions) of the City Council of Dripping Springs, Texas.**

CITY OF DRIPPING SPRINGS:

by: 

Mayor Todd Purcell

ATTEST:


Kerri Craig, City Secretary

TABLE OF CONTENTS

1. ACKNOWLEDGEMENTS	PAGE 3
Dripping Springs City Council - Dripping Springs Parks and Recreation Commission - Dripping Springs Staff - LUCK Design Team	
2. EXECUTIVE SUMMARY	PAGE 4
Inventory - Public Input - Objectives - Facility Needs - Recommendations - Implementation Plan-Adoption	
3. DRIPPING SPRINGS IN CONTEXT	PAGE 6
Location - Geography - Vegetation - Demographics of Dripping Springs	
4. OBJECTIVES OF THE PARKS, RECREATION AND OPEN SPACE MASTER PLAN	PAGE 9
5. INVENTORY	PAGE 10
Existing Developed Parks Inventory - Matrix of Existing Park Amenities- Existing Parks /Parks Service Area Map - Non-City Owned Parkland	
6. NEEDS ASSESSMENT SURVEY	PAGE 24
Results	
7. STANDARDS AND GUIDELINES	PAGE 32
Park Amenity and Park Acreage Guidelines	
8. PARK NEEDS IMPLEMENTATION PLAN	PAGE 36
Outdoor Recreation Facility Priorities - Indoor Recreation Facility Priorities- Acquisition of Future Community Parkland - Future Parks /Parks Service Area Map - Implementation Action Plan	
9. APPENDIX	PAGE 41
Dripping Springs Parks, Recreation, Open Space & Trail Master Plan Survey	
Public Comments from Community Survey Question No. 8	PAGE 48
Public Comments from Community Survey Question No. 9	PAGE 60
Additional Information from Community Survey Question No. 11	PAGE 72
Neighborhood Park Amenities and Associated Range of Costs	PAGE 74
Community Park Amenities and Associated Range of Costs	PAGE 75

1. ACKNOWLEDGEMENTS

The City of Dripping Springs, Texas partnered with the park planning and design firm LUCK Design Team to prepare the *Dripping Springs Parks, Recreation and Open Space Master Plan 2014-2024*. City personnel, members of the Dripping Springs Parks and Recreation Commission and staff from LUCK Design Team developed the plan between April 2013 and January 2015. *The Dripping Springs Parks, Recreation, and Open Space Master Plan 2014-2024* reflects a range of issues and levels of planning within the broad-scale contextual relationship of parks in the community.

The City would like to thank all the residents who completed the parks needs assessment survey and who actively participated in our public outreach meetings. The design team would also like to thank the individuals below who contributed to the vision, development and completion of the Master Plan.

City Council

Mayor Todd Purcell
Mayor Pro Tem Bill Foulds
Councilmember Santos Alba
Councilmember Charles Busbey
Councilmember Wade King
Councilmember John Kroll

Parks and Recreation Commission

Robbie Zamora (Chair)
Eric Russell (Vice Chair)
Britt Figueroa
Robert Hayden
Eric Henline
Ron Jones
Wade King
Rich Moore

Dripping Springs Staff

Michelle Fischer, City Administrator
Jon Thompson, Planning Director

LUCK Design Team, LLC

Brent Luck, Project Manager

2. EXECUTIVE SUMMARY

As part of the development of this Parks, Recreation, and Open Space Master Plan, the City of Dripping Springs wanted to ensure that residents and visitors had excellent park, leisure, and recreational experiences.

The Texas Parks & Wildlife Department (TPWD) provides cities with grant monies for park acquisition and development and recommends that a new Parks, Recreation, and Open Space Master Plan be developed every five years. This plan must be adopted by the City and approved by TPWD for the City to be competitive in the Outdoor Recreational Grant Program scoring system.



In 2010, the City of Dripping Springs adopted the City of Dripping Springs Comprehensive Plan 2010 and in 2012 completed the Sustainable Places Project : Dripping Springs. Both of these documents promote health recreational lifestyles and communities. In April of 2013, the City of Dripping Springs contracted with LUCK Design Team to assist in planning and formulating the *Dripping Springs Parks, Recreation, and Open Space Master Plan 2014-2024* to complement and build upon these two documents in regards to the future of the City's park system.

The design team first met with the City of Dripping Springs Parks and Recreation Commission and City Staff to establish overall objectives for the *Dripping Springs Parks, Recreation, and Open Space Master Plan 2014-2024* (shown below) and to give direction regarding the future planning of the City's park, recreation and open space system. These objectives were later solidified after input from the public from community outreach efforts.

OBJECTIVES OF THE PARKS, RECREATION AND OPEN SPACE MASTER PLAN:

- Develop a network of multiuse trails that builds connectivity within the city limits and extraterritorial jurisdiction (ETJ) of Dripping Springs by linking parks and cultural amenities to each other and to residential neighborhoods.
- Establish a level of high quality parks throughout the City, in particular by upgrading and maintaining the existing City of Dripping Spring's Parks to the highest level.
- Communicate the many different park, recreational and open space opportunities available to residents within the City through enhanced marketing efforts.

In May of 2013, the Parks and Recreation Commission and City Staff developed and distributed the City of Dripping Springs Parks, Open Space and Trails Plan Survey 2013-2023 to allow residents to identify park needs and recreation priorities. Surveys were accessed on the City's web-site. The City received 695 responses to the survey from residents living within the Dripping Springs city limits and the Dripping Springs extraterritorial jurisdiction (ETJ), as well as those located in the Dripping Springs ISD service area.

City Staff completed a physical inventory for the entire park system of Dripping Springs, which included park acreage, park classification and existing park amenities located in individual City parks.

Park acreage and amenity standards were then developed with the Parks and Recreation Commission to guide the City in future planning and development. Using a hybrid of the National Recreation and Park Association (NRPA) standards, the City developed its own park standards to more accurately fit the needs of Dripping Springs and to continue to provide a high level of excellent service to its residents as the City continues to grow. Using these amenity standards, guidelines for park acreage and additional facilities were developed for projected populations in the calendar years of 2019 and 2024. These guidelines for acreage included existing parks and undeveloped park land currently owned by the City.

The needs assessment surveys were gathered and results were tabulated as high, moderate, and low priorities for both indoor and outdoor recreational facilities. The weighted input and survey response from the general public, City Staff, and the Dripping Springs Parks and Recreation Commission determined these priorities (shown to the right). Once these priorities were developed, the Commission outlined an implementation plan with recommendations and potential time frames within which to accomplish the priorities.

The design team provided the Parks and Recreation Commission with draft copies of the *Dripping Springs Parks, Recreation, and Open Space Master Plan 2014-2024* in January of 2015 for its review and approval.

OUTDOOR RECREATIONAL FACILITY PRIORITIES:

High Priorities

- Walking / Hiking / Biking Trails
- Natural Areas and Open Space
- Playscapes / Playgrounds
- Water playscape / Splash Pads

Medium Priorities

- Skate Park
- Dog Park
- Baseball Fields
- Equestrian / Livestock Arenas
- Fishing Access Areas
- Multipurpose Spaces (Sports)
- Soccer Fields
- Tennis Courts

Low Priorities

- Wildlife Viewing Areas
- Amphitheater
- Football Fields
- Community Gardens
- Indoor Pools
- Pavilions / Shelters
- Picnic Areas
- Basketball Courts
- Softball Fields
- Botanical Gardens
- Lacrosse Fields
- Disc Golf
- BMX Track
- Volleyball Courts

3. DRIPPING SPRINGS IN CONTEXT

LOCATION

Dripping Springs is located in Central Texas approximately twenty-three miles west of Austin. Dripping Springs is defined as the “Gateway to the Hill Country” on US Highway 290 in northwest Hays County.

<u>Proximity to Major Metros</u>	<u>(Distance in Miles)</u>
Austin	23

<u>Nearby Cities</u>	<u>(Distance in Miles)</u>
Kyle	22
San Marcos	29
Wimberley	14
Blanco	25
Marble Falls	47

POPULATION DYNAMICS

The City of Dripping Springs has a very unique population demographic that bears heavily into the planning process. Approximately 2,000 people reside within the city limits of Dripping Springs. These residents dictate the direction and growth of the City through tax funding and voting directives.

An additional 20,000 people live within the ETJ of the City. This portion of the population utilizes much of the City’s park infrastructure, although they do not directly bear the tax burden; however, many of these same ETJ residents provide much of the volunteer labor for the upkeep of the parks and represents a significant leadership base in running the youth sports organizations within the City.

In order for the City to grow its park infrastructure system to meet the demands of both population demographics, a creative balance needs to be identified where residents of the City and those within the ETJ equally share the burden of both development and maintenance costs associated with the City’s parks system.

CITY OF DRIPPING SPRINGS- 2010 DEMOGRAPHIC PROFILE DATA

TOTAL POPULATION¹: 1,788

AGE¹

Median Age:	37.8 years old	
Under 5 years	114	6.4%
5 to 9 years	120	6.7%
10 to 14 years	179	10.0%
15 to 19 years	129	7.2%
20 to 24 years	101	5.6%
25 to 29 years	76	4.2%
30 to 34 years	100	5.6%
35 to 39 years	119	6.7%
40 to 44 years	149	8.3%
45 to 49 years	141	7.9%
50 to 54 years	119	6.7%
55 to 59 years	125	7.0%
60 to 64 years	91	5.1%
65 to 69 years	87	4.9%
70 to 74 years	40	2.2%
75 to 79 years	43	2.4%
80 to 84 years	26	1.5%
85 years and older	29	1.6%

GENDER¹

Males:	913	51.1%
Females:	875	48.9%

RACE¹

Total Population	1,788	
Hispanic/Latino	521	29.1%
Mexican	450	25.2%
Puerto Rican	4	0.2%
Cuban	2	0.1%
Other Hispanic	65	3.6%
Not Hispanic/Latino	1,267	70.9%
White Alone	1,220	68.2%
Black or African American Alone	12	0.7%
American Indian/ Alaska Native Alone	10	0.6%
Asian Alone	0	0.0%
Native Hawaiian Alone	0	0.0%
Some Other Race Alone	1	0.1%
Two or more Races	24	1.3%

TOTAL HOUSEHOLDS ¹	662	
Households with individuals under 18	244	36.9%
Households with individuals 65 years+	169	25.5%
Average Household Size	2.69	

HOUSING TENURE ¹		
Owner- Occupied Housing Units	425	64.2%
Renter- Occupied Housing Units	237	35.8%

SOURCE:

1. U.S. Census, 2010 Census; <http://factfinder2.census.gov/faces/nav/jsf/pages/searchresults.xhtml?refresh=t#none>; retrieved 08.14.14

Population Estimates				
Year	City of Dripping Springs Population	Dripping Springs ETJ Population		
2010	1,794			
2011	1,852			
2012	1,912	20,000	^	
2013	1,974	20,646		
2014	2,037	21,313		
2015	2,103	22,001		
2016	2,171	22,712		
2017	2,241	23,446		
2018	2,314	24,203		
2019	2,388	24,985		
2020	2,465	25,792		
2021	2,545	26,625		
2022	2,627	27,485		
2023	2,712	28,372		
2024	2,800	29,289		
2025	2,890	30,235		
Notes:				
1. The 2012 Dripping Springs Population Estimate of 20,000 was estimated by Jon Thompson, Planning Director at the City of Dripping Springs.				
2. A 3.23% population growth was used in this projection table, which matches the .5 2000-2010 migration projection growth for Hays County as determined by the Texas State Demographers Office.				

4. OBJECTIVES OF THE PARKS, RECREATION AND OPEN SPACE MASTER PLAN

The goals and objectives for the *Dripping Springs Parks, Recreation, and Open Space Master Plan 2014-2024* (stated below) were developed by the City of Dripping Springs Parks and Recreation Commission to complement the parks and open space objectives of the City of Dripping Springs Comprehensive Plan 2010 and the six livability principles outlined in the Sustainable Places Project : Dripping Springs document. The Commission agreed that these objectives are paramount to the vision of the *Dripping Springs Parks, Recreation, and Open Space Master Plan 2014-2024*: providing citizens with an economically fiscal plan that meets the highest priority needs of the citizens now, while laying the groundwork for park development and expansion in the future.

These objectives include:

- OBJECTIVE 1:** Develop a network of multiuse trails that builds connectivity within the city limits and extraterritorial jurisdiction (ETJ) of Dripping Springs by linking parks and cultural amenities to each other and to residential neighborhoods.
- OBJECTIVE 2:** Establish a level of high quality parks throughout the City, in particular by upgrading and maintaining the existing City of Dripping Springs' Parks to the highest level.
- OBJECTIVE 3:** Communicate the many different park, recreational and open space opportunities available to residents within the City through enhanced marketing efforts.



5. INVENTORY

To project future park and recreation needs for the *Dripping Springs Parks, Recreation, and Open Space Master Plan 2014-2024*, an accurate inventory and assessment of existing park lands has been divided into the following four categories:

Existing Developed Park Land –

This category includes all park facilities that are recognized as parks by the City of Dripping Springs and have a developed park infrastructure. They are classified into five potential classifications.

Mini-Park. Mini-parks are small areas typically an acre or less that are used to address limited, isolated or unique recreational uses or as adjuncts to other areas. They are typically less than one-quarter (1/4) mile in distance from a residential or commercial area.

Neighborhood Park. The neighborhood park remains the basic unit of the park system and serves as the recreational and social focus of the neighborhood. Focus is on informal active and passive recreation. It is typically one-quarter to one-half (1/4 to 1/2) mile distance from all areas it serves and uninterrupted by nonresidential roads and other difficult barriers. The site should be accessible from throughout its service area by way of interconnecting sidewalks. The minimum size is three (3) acres, with five to ten (5 to 10) being optimal. “Leftover” parcels of land that are undesirable for development are generally undesirable for neighborhood parks as well and should be avoided. The shape of the park land shall be conducive to meeting its purpose as a neighborhood park. There should be sufficient on-street parking, lighting for night safety and appropriate utilities to serve its users. Desirable views into and out of the park should have a unique character or experience and provide visibility of all recreational elements and facilities for security purposes.

Community Park. The community park usually serves a broader purpose than other types of parks. The main focus is on meeting community-based recreation needs, as well as preserving unique landscapes and open spaces. The location of such parks is determined by the quality and suitability

of the site. The community park usually serves two or more neighborhoods and serves an area within (2) two miles of its location. The community park is sized to meet its needs and is normally between thirty to one hundred (30 to 100) acres.

Special Use Park. The special use park covers a variety of park and recreational facilities oriented toward a single-purpose



use. The location and size depends upon the type of special use facility. Examples of such recreational space would include nature parks, athletic field complexes, amphitheater, equestrian facilities, etc.

Natural Resource Park. Certain lands within the city and its ETJ may be significant natural resources, remnant landscapes, open space and visual aesthetics. Such areas should become natural open space areas. The location and size are dependent upon the relative land and its location.

Documented on pages 12-23, the Existing Park Inventory includes all designated and developed park land owned by the City of Dripping Springs. Each inventory includes the location of the park, acreage, existing and proposed park classification, and the recreational facilities located in each park.

Undeveloped Land Owned by the City of Dripping Springs –

The second parkland inventory category involves land owned by the City of Dripping Springs that is undeveloped as of yet for recreational purposes but has been officially designated as “parkland” by the City. Approximately 13.58 acres of land known as Arrowhead Park in west Dripping Springs is currently classified as undeveloped parkland.

Joint Use Facilities with Local Independent School Districts –

This category includes park and recreation amenities associated with local Independent School Districts. Although not owned, operated or maintained by the City of Dripping Springs, these facilities do serve the residents of Dripping Springs and should be noted. A list of the district schools, their locations and recreational facilities is located on page 22.

FOUNDERS MEMORIAL PARK 490 FOUNDERS PARK ROAD



EXISTING AMENITIES	QUANTITY		CONDITION			ACCESSIBILITY
			GOOD	FAIR	REPLACE	
Pool House	1			1		Y
Playscape for ages 5-12	1		1			N
Playscape for ages 2-5	1			1		N
Tricycle Loop	1		1			N
Swing Set	1		1			N
Pavilion	1		1			Y
Swimming Pool	1			1		Y
Wood Picnic Tables	7			7		Y
Metal Picnic Tables	8		8			Y
Football Field	2		2			N
Multi-Use Field	1		1			N
Concrete Picnic Tables	8		8			N
BBQ Grill	2			1	1	N
Walking/Running Trail	.71 miles			.71 miles		Y
Parking Lot-Pav/Pool	1		1			Y
Parking Lot-Football Field	1		1			Y
Brumley Garden	1		1			N
Metal Benches	2		2			N

ACREAGE: **40.00 ACRES**

CURRENT CLASSIFICATION: **COMMUNITY PARK**

FOUNDERS MEMORIAL PARK CONTINUED



ACREAGE: **40.00 ACRES**

CURRENT CLASSIFICATION: **COMMUNITY PARK**

SPORTS AND RECREATION PARK 27148 RANCH ROAD 12



ACREAGE: **40.00 ACRES**

CURRENT CLASSIFICATION: **COMMUNITY PARK**

SPORTS AND RECREATION PARK CONTINUED



ACREAGE: **40.00 ACRES**

CURRENT CLASSIFICATION: **COMMUNITY PARK**

SPORTS AND RECREATION PARK CONTINUED

EXISTING AMENITIES	QUANTITY	CONDITION			ACCESSIBILITY
		GOOD	FAIR	REPLACE	
UIL Baseball Field - 320-355'	1	1			Y
UIL Softball Field - 210'	1	1			N
Adult Softball Field Upper - 300'	1		1		N
Adult Softball Field Lower-300'	1		1		N
Soccer Field	1		1		Y
Multi-Use Court	1	1			N
Sand Volleyball Court	1	1			N
Washer Courts	4		4		N
Playscape for ages 5-12	1		1		N
Picnic Tables	25	25			Y
Benches	11	11			Y
Trash Receptacles	5	5			Y
BBQ Pits	6			6	Y
Interpretive Kiosk	1	1			Y
Trail Fitness Center	1	1			N
Concession Stand/Restrooms	1	1			N
Satellite Restrooms	1	1			N
U-6 Soccer Fields - Lighted	5		5		N
U-8 Soccer Fields - Lighted	2		2		N
U-10 Soccer Field - Lighted	2		2		Y
U-12 Soccer Field - Lighted	1		1		Y
U-14 Soccer Field - Lighted	1		1		Y
Walking/Running Trail	1.22 Miles	1.22 Miles			Y
Parking Lot-South Soccer	1	1			Y
Parking Lot-Playscape	1	1			Y
Parking Lot-Adult Softball	1	1			Y
Parking Lot-UIL Ball Fields	1		1		Y
Batting Cage	6		6		N

VETERANS MEMORIAL PARK 130 EAST MERCER



EXISTING AMENITIES	QUANTITY	CONDITION			ACCESSIBILITY
		GOOD	FAIR	REPLACE	
Limestone Benches	2	2			N
Wood Benches	2	2			N
Prefabricated Benches	2		2		N
Trash Receptacles	3	3			N
Wood Picnic Tables	2	2			N

ACREAGE: **3.71 ACRES**

CURRENT CLASSIFICATION: **MINI PARK**

CHARRO RANCH PARK 22690 W. FM 150



EXISTING AMENITIES	QUANTITY	CONDITION			ACCESSIBILITY
		GOOD	FAIR	REPLACE	
Wood Picnic Tables	5	4	1		N
Benches	8	8			N
Kiosk	1	1			N
Peace Sign	1	1			N
Trash Receptacle	1	1			N
Solstice Circle & Table	1	1			N
Bird Viewing Station	1				N
Walking/Hiking Trail	2.75	2.75			N
Wildlife Watering/Rain Guzzler	1	1			N
Water Tank-Demo Garden	1	1			N

ACREAGE: **64.00 ACRES**

CURRENT CLASSIFICATION: **NATURAL RESOURCES PARK**

DRIPPING SPRINGS RANCH PARK 1042 DS RANCH ROAD

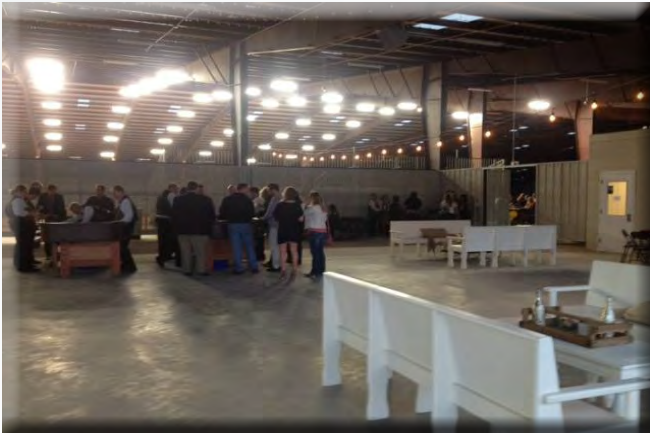


EXISTING AMENITIES	QUANTITY		CONDITION			ACCESSIBILITY
			GOOD	FAIR	REPLACE	
Wildlife Waterer	1		1			Y
Playscape for ages 5-12	1		1			Y
Outdoor Seating Area	1		1			N
Storage Shed	1		1			N
Run-In/ Loafing Sheds	4			1	3	N
Ranch House	1		1			Y
Arena	2					Y
Picnic Tables	10		10			Y
Concession Stand	2		1	1		N
Announcer Booth	2		2			Y
Barn	1		1			Y
Round Pen	1			1		N
Grill	1		1			Y
Swing	1		1			N
Perimeter Trail (Pedestrian)	.75 miles		.75 miles			Y
Perimeter Trail (Equestrian)	2.0 miles		2.0 miles			

ACREAGE: **110.00 ACRES**

CURRENT CLASSIFICATION: **SPECIAL USE PARK**

DRIPPING SPRINGS RANCH PARK CONTINUED



Existing Parks Acreage Table

Park Facility Name	Location	Acres	Park Classification
Arrowhead Park	West Dripping Springs	13.58	Community Park
Founders Memorial Park	490 Founders Park Road	40.00	Community Park
Sports and Recreation Park	27148 Ranch Road 12	40.00	Community Park
Veterans Memorial Park	130 East Mercer	3.71	Mini Park
Charro Ranch Park	22690 W. FM 150	64	Natural Resources Park
Dripping Springs Ranch Park	1042 DS Ranch Road	110	Special Use Park
Total		271.29	
2014 Dripping Springs Population=	2,037		
ETJ=	21,313		

Recreational Amenities Table - City of Dripping Springs

Park Facility Name	Baseball Fields	Bird Viewing Station	Basketball Goals	BBQ Grills	Benches	Disc Golf Standards	Equestrian Arena	Football Fields	Gardens	Horseshoe Courts	Meeting Rooms	Multi-Purpose Courts	Multi-Purpose Fields	Outdoor Meeting Area	Pavilions	Picnic Tables	Playgrounds	Soccer Field	Softball Fields	Swimming Pool	Tennis Courts	Trails (in Miles)	Volleyball	Washers Courts
Founders Memorial Park				2	2			2	1				1		1	23	2			1		0.71		
Sports and Recreation Park	1			6	11							1				25	1	5	3			1.22	1	4
Veterans Memorial Park					6											2								
Charro Ranch Park		1			8			1						1		5						2.75		
Dripping Springs Ranch Park				1			1							1		10	1					0.75		
Total	1	1	0	9	27	0	1	2	2	0	0	1	1	2	1	65	4	5	3	1	0	5.43	1	4

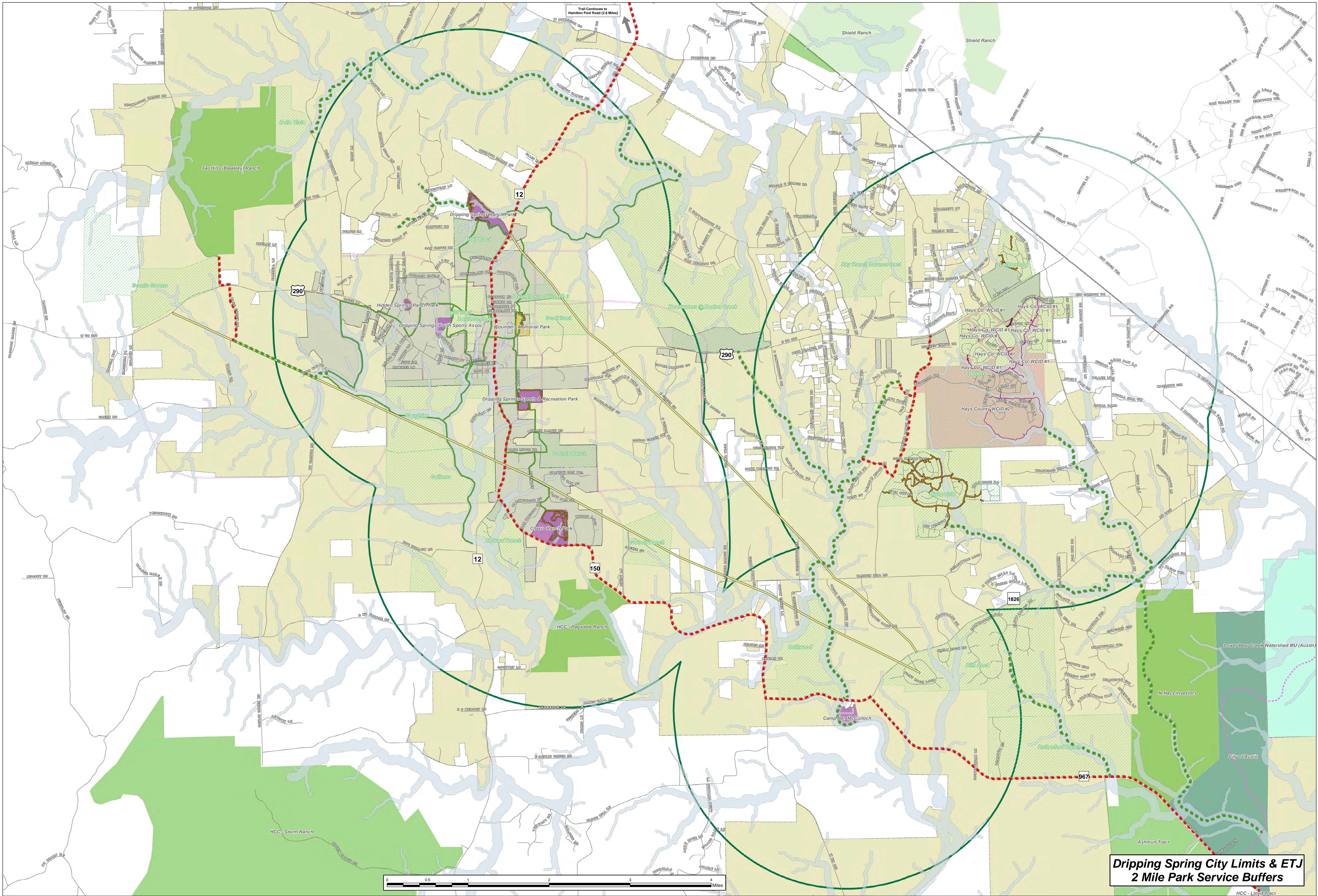
CITY OF DRIPPING SPRINGS SUPPORTED RECREATIONAL PROGRAMS AND LOCAL INDEPENDENT SCHOOL DISTRICT FACILITIES

Currently, Dripping Springs has one independent school districts that has educational and recreational facilities within the City limits. The table below documents the district schools, their locations and recreational facilities.

DRIPPING SPRINGS INDEPENDENT SCHOOL DISTRICT

NAME OF SCHOOL	ADDRESS	TYPE OF SCHOOL	RECREATIONAL FACILITIES AT SCHOOL
Dripping Springs Elementary School	19400 Ranch Road 12 North	Elementary School Pre-K thru 5th	(1) Basketball Court (2) Four Square Courts (1) Playground
Rooster Springs Elementary School	1001 Belterra Drive	Elementary School Pre-K thru 5th	(3) Playgrounds (3) Basketball Courts (1) Track
Walnut Springs Elementary School	300 Sportsplex Drive	Elementary School	(2) Basketball Courts (1) Track (8) Four Square Courts (2) Playgrounds
Dripping Springs Middle School	111 Tiger Lane	Middle School	(1) Football Field (1) Track (8) Tennis Courts (1) Practice Baseball Field
Dripping Springs High School	940 Highway 290 West	High School	(1) Football Field - Game (1) Football Field - Practice (1) Track (8) Tennis Courts

The recreational facilities at the school are not owned by the City of Dripping Springs; however, either officially or unofficially, they do provide recreational opportunities for Dripping Springs residents. As such, the facilities are included in the *Dripping Springs Parks, Recreation and Open Space Master Plan 2014-2024* for contextual purposes.



Open Space Master Plan Dripping Springs, TX

This product is for informational purposes only and may not have been prepared for or be suitable for legal, engineering, or surveying purposes. It does not represent an on-the-ground survey and represents only the approximate relative location of property boundaries.

Legend - 1" = 2000'

- Developer Trails
- On Road Proposed
- Off Road Proposed
- Utility Easement

HCC Violet Crown Trail

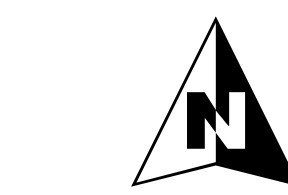
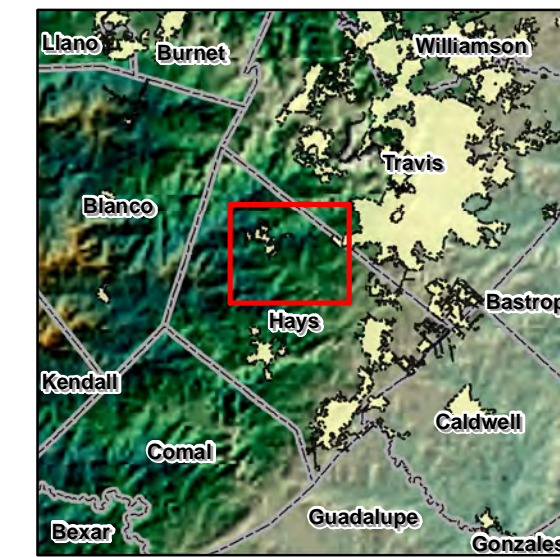
- Adopted Trails
- Existing Off Road Trails
- Water Quality Buffer Zones
- Potential Subdivisions
- Future Transportation Plan
- Regional Texas Roads

Parks & Openspace

- Community Park
- Conservation Easement
- County Park
- Greenspace
- HOA/ Pocket Park

- Hike/ Bike Trail
- Natural Area/ Preserve
- Undefined
- WCID/ MUD Park
- Water Quality Lands
- 2 Mile Service Buffer - Parks

- Dripping Springs City Limits
- Dripping Springs ETJ
- Hays County Boundary



PROJECT NO.
1969-2-002-20

Luck Design Team
DS Master Plan

LUCK DESIGN TEAM

Date: March 23rd, 2015

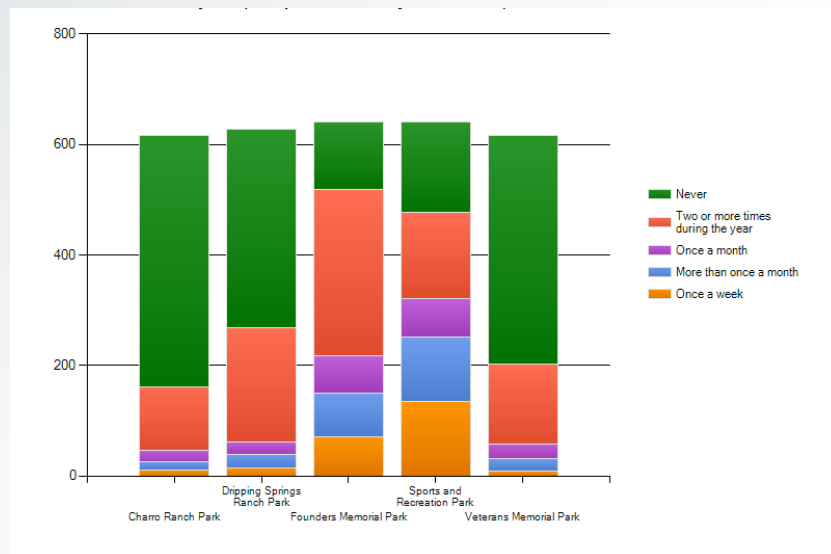
BAKER-AICKLEN & ASSOCIATES, INC.
1001 WEST LIBERTY AVE.
SUITE 100
DRIPPING SPRINGS, TX 78620
737.681.1111
WWW.BAKER-AICKLEN.COM

6. NEEDS ASSESSMENT SURVEY

In May of 2013, the City conducted the Dripping Springs Parks, Recreation, Open Space & Trail Master Plan Survey. Public responses from the survey captured citizen input regarding the general growth and direction they would like to see for the City's park and recreation system. (The survey is included in the Appendix on page 42.) Through mail and web-based responses, the City received 695 completed surveys. Individual survey questions and results are provided on the following pages.

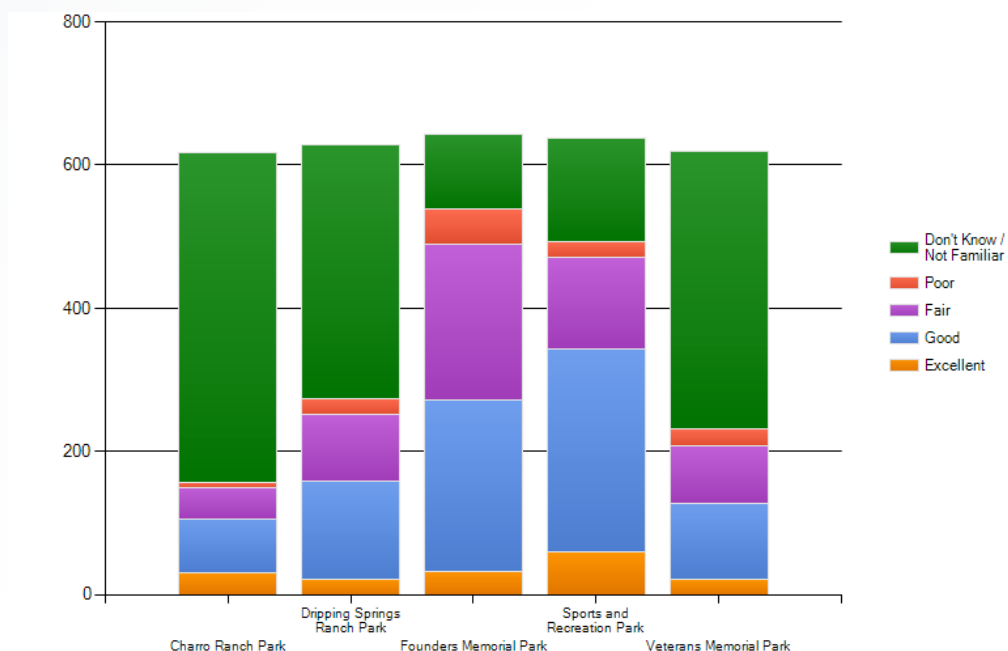
QUESTION 1:

How often have you or members of your household visited the City parks listed below or used recreation facilities in Dripping Springs within the last year? (Please indicate one answer.)



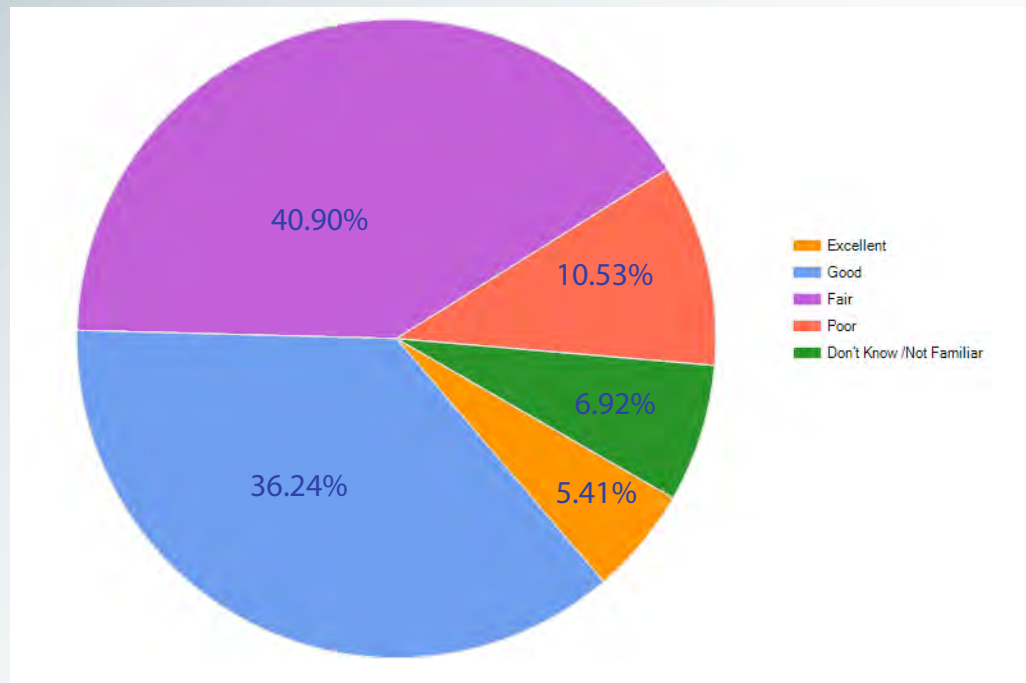
QUESTION 2:

How would you rate the physical condition of the parks in Dripping Springs? (Multiple answers may be indicated.)

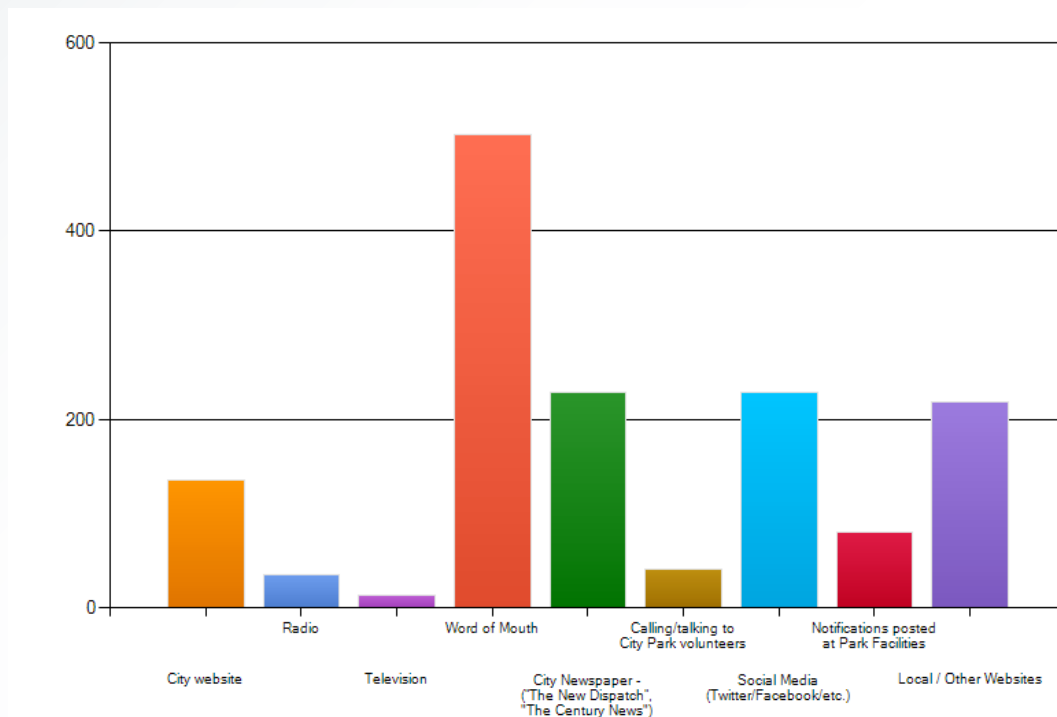


QUESTION 3:

Overall, how would you rate the parks and recreation opportunities in Dripping Springs? (Please

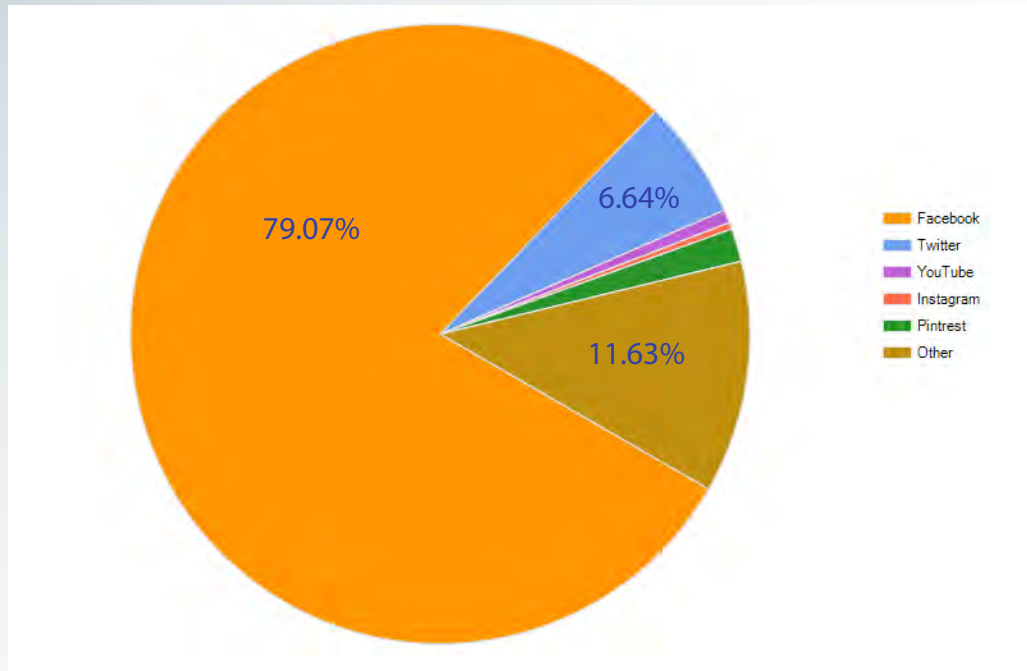
**QUESTION 4:**

From the list below, please mark the top four ways you learn about parks and recreation activities offered in Dripping Springs? (Indicate only four answers.)



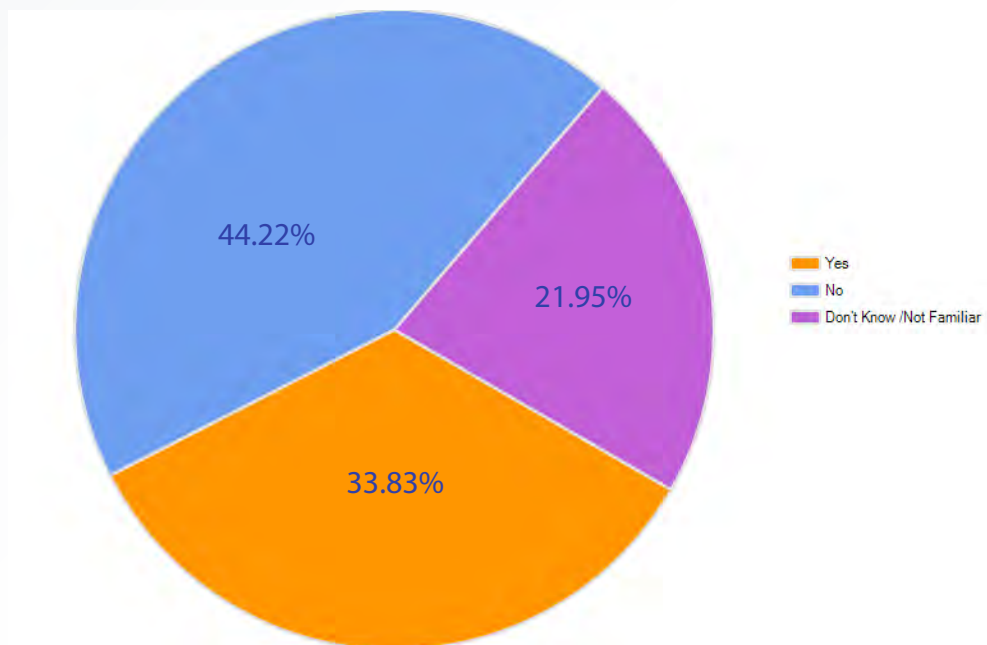
QUESTION 5:

If you selected "social media" in Question 4 as one of the top four ways you learn about parks and recreation activities offered by the City of Dripping Springs, which social media platform do you prefer? (Indicate only one answer.)



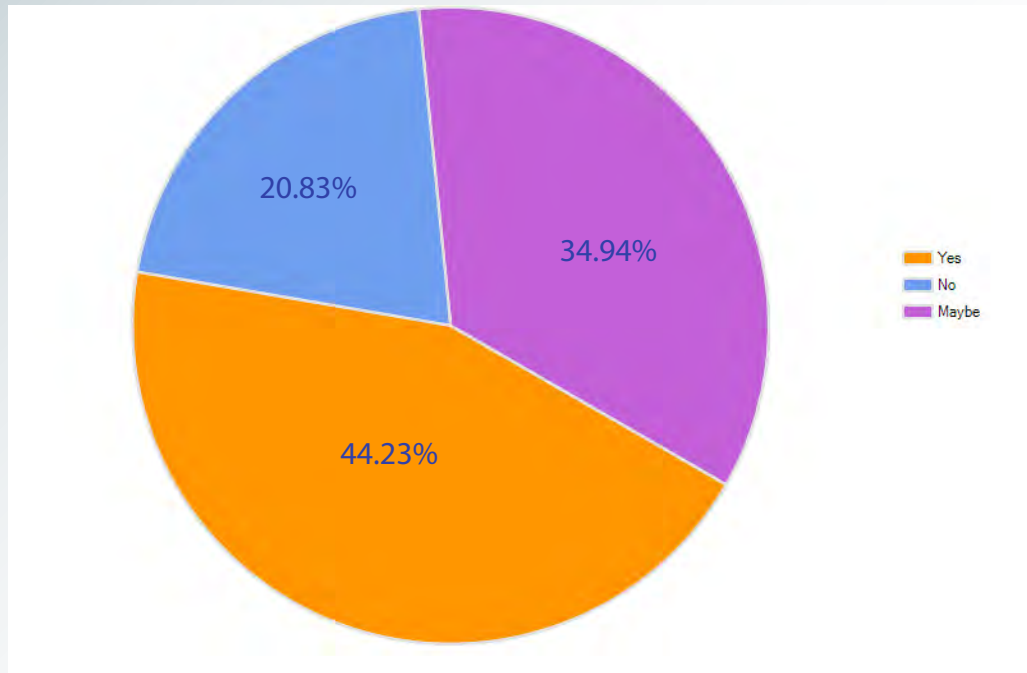
QUESTION 6:

Does the City have enough parkland? (Please indicate one answer.)



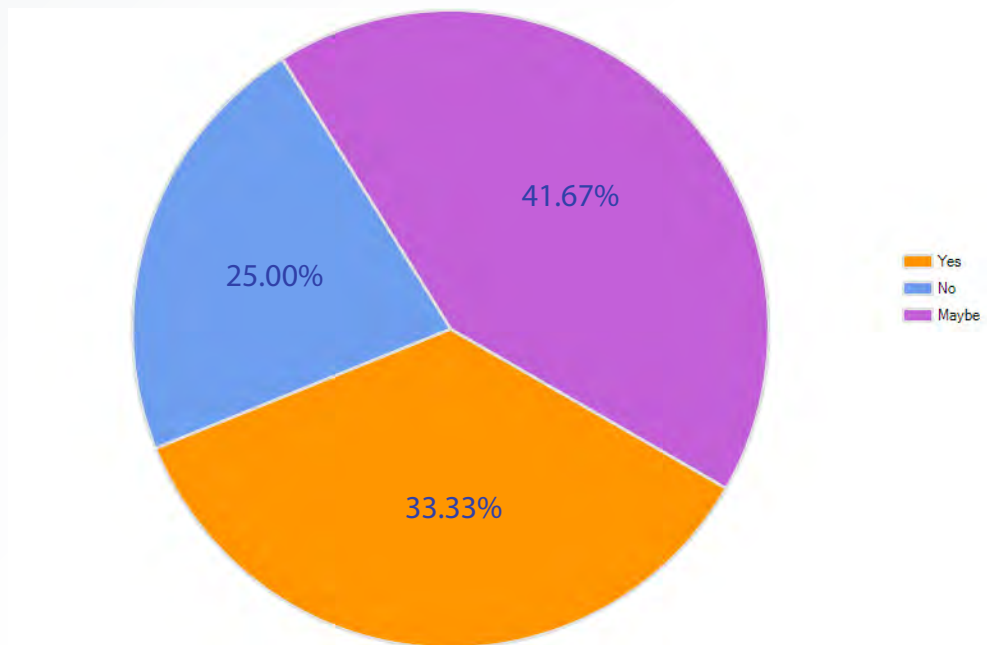
QUESTION 7:

Would you support a Bond Election for funds to develop new and existing public parks and recreation facilities?



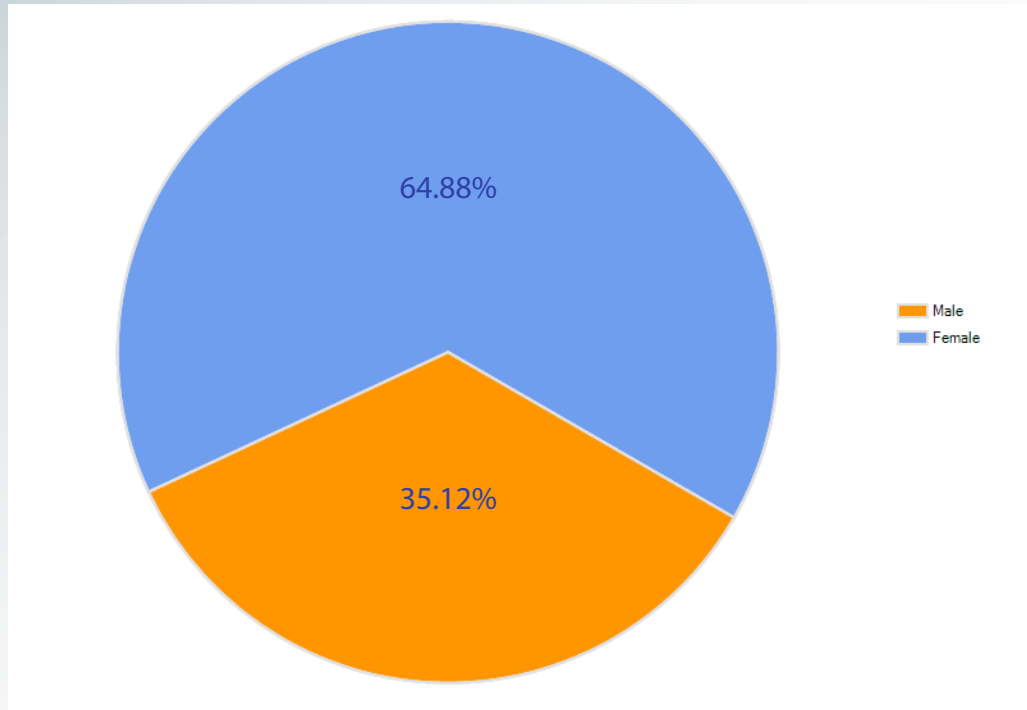
QUESTION 7: WITHIN CITY LIMITS ONLY

Would you support a Bond Election for funds to develop new and existing public parks and recreation facilities?



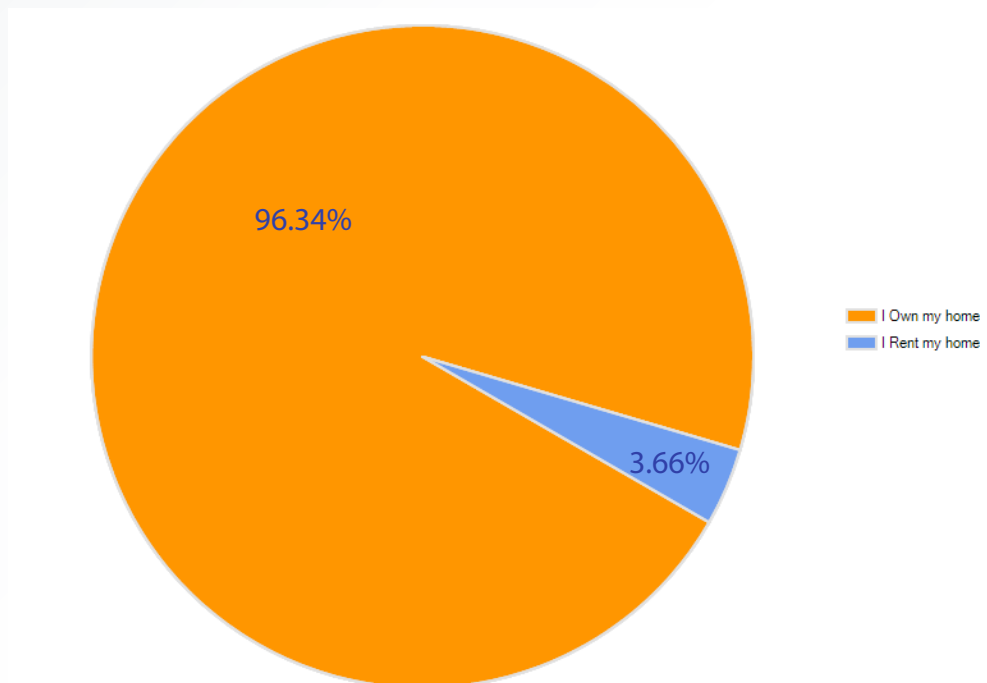
QUESTION 16:

I am:



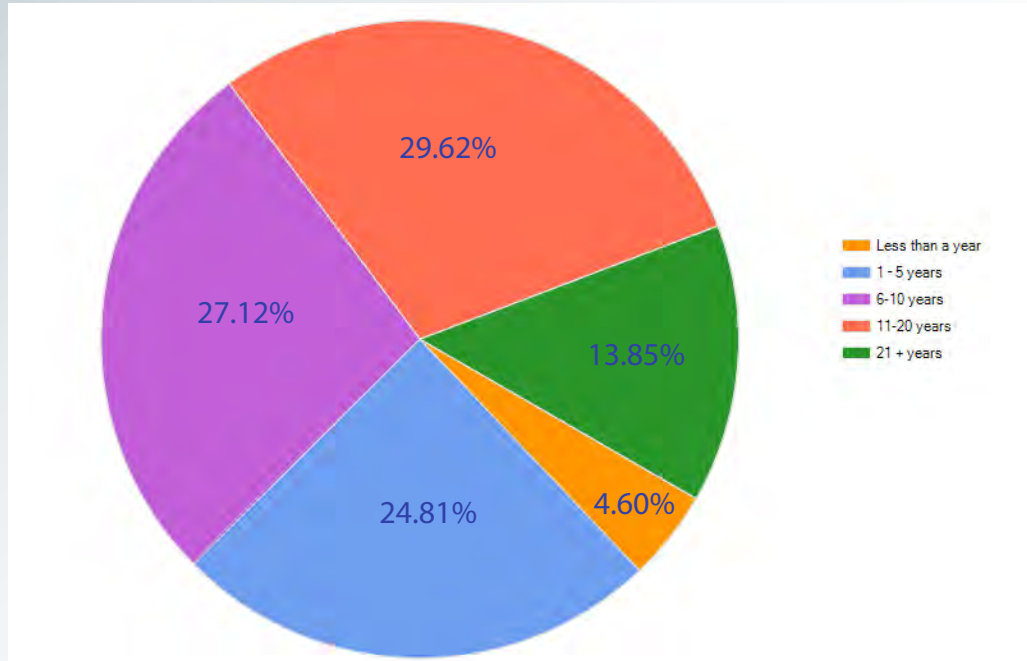
QUESTION 17:

I Own my home / Rent my home



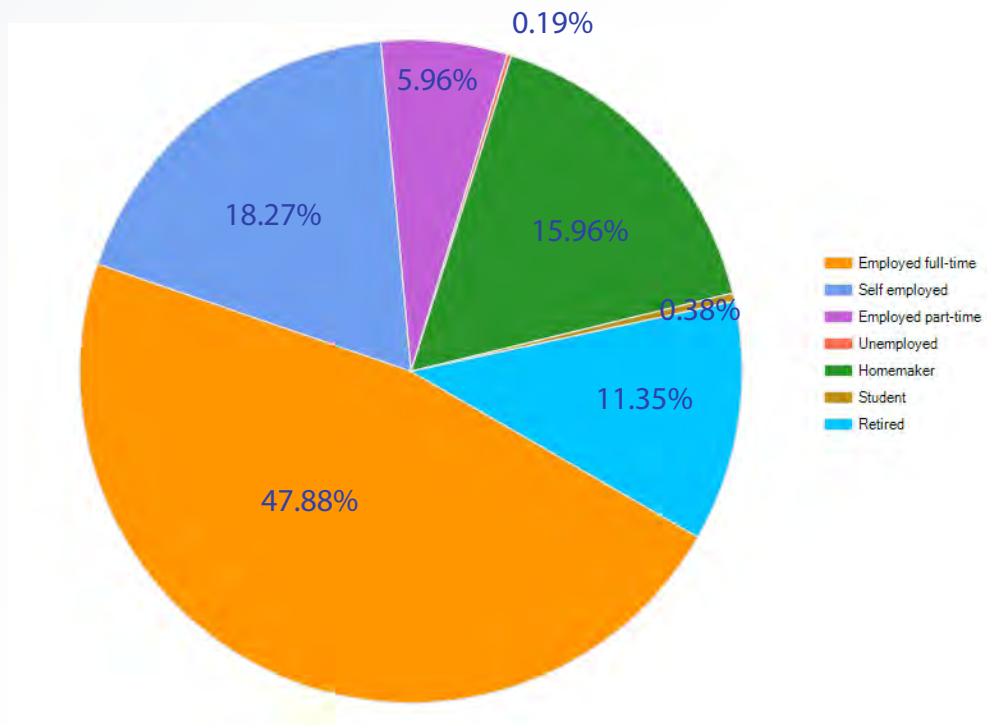
QUESTION 18:

I have lived in Dripping Springs for _____ years. (Indicate only one answer.)



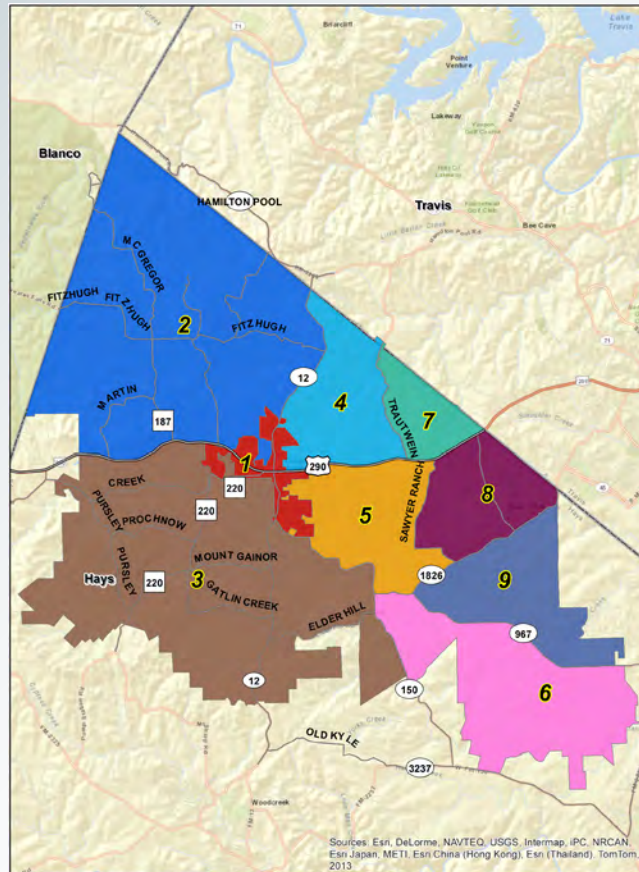
QUESTION 20:










I am: (Indicate only one answer.)



QUESTION 19:

Which area of the City do you live in? (Indicate only one answer.)



	Area 1 -	9.18%
	Area 2 -	26.58%
	Area 3 -	8.99%
	Area 4 -	12.43%
	Area 5 -	15.49%
	Area 6 -	0.57%
	Area 7 -	5.54%
	Area 8 -	18.16%
	Area 9 -	3.06%

QUESTION 11:

11) From the FACILITIES listed in Question 10, please indicate the top three that are the most important to your household? (Write in your preference below.)

Overall

Categories	1st	2nd	3rd	Total Score
Trails	91	61	33	428
Senior Center	52	21	22	220
Playscapes / Playgrounds	47	10	23	184
Natural Areas and Open Space	27	36	29	182
Outdoor Pools	28	30	24	168
Dog Parks	30	16	11	133
Multi-Purpose Indoor Center	12	23	27	109
Picnic Areas	12	15	28	94
Indoor Pools	13	18	10	85
Tennis Courts	13	10	7	66
Fishing Access Areas	6	11	18	58
Pavilions/Shelters	2	20	3	49
Soccer Fields	10	6	6	48
Baseball Fields	7	9	5	44
Community Gardens	3	7	11	34
Water Playscapes	1	9	10	31
Basketball Courts	4	5	8	30
Disc Golf	3	7	5	28
Botanical Gardens	2	8	6	28
Softball Fields	4	4	4	24
Skate Parks	2	6	3	21
BMX Track	3	4	2	19
Volleyball Courts	1	1	3	8
Football Fields	2	1	0	8

NOTE:

1. The text highlighted "blue" in the table above designates indoor facilities.
2. Scoring is based on 3 points for 1st place, 2 points for 2nd place and 1 point for 3rd place.

7. STANDARDS AND GUIDELINES

The National Recreation and Parks Association (NRPA) provides the industry standard for parks, recreation, and open space design as recognized by park planning professionals throughout the country. This master plan follows the latest published nomenclature and standards as outlined by NRPA in the Parks, Recreation, Open Space, and Greenway Guidelines 1990 edition.

NRPA has directed that each municipality or governmental agency develop and provide its own guideline for growth and park planning as dictated by local conditions. As such, a numerical nationwide template of standards for parks growth does not exist, although the development of a standard for each municipality is exhorted. Previously, NRPA had directed a minimum of 11-acres of parkland /1000 population.

With that background the following standards and guidelines are to be used by the City of Dripping Springs as a guide for minimum goals to be achieved by the City as its park system further develops. As with any issue that arises, the practice of these standards to specific situations should be applied with the wisdom of the local needs.

For purposes of this master plan, Dripping Springs has divided park classifications into the following categories:

MINI PARKS – Typically, Mini Parks vary from 2500 SF to 1 acre in size and service the immediately surrounding area up to a 1/4 mile radius. Amenities in these parks are unique to the area and in some cases are simply open space areas.

NEIGHBORHOOD PARKS -As the basic unit of any City's park system, neighborhood parks serve residents in a 1/4 to 1/2 mile area. Typically, there is little if any parking and roadway infrastructure at the park and the focus tends to be on informal activities and servicing passive recreational needs.

COMMUNITY PARKS -Active program elements such as ball fields and larger community based recreation needs are served by the Community Park classification. Typically, these parks range from 30 to 100-acres in size and have a two mile level of service area.

SPECIAL USE PARK. The special use park covers a variety of park and recreational facilities oriented toward a single-purpose use. The location and size depends upon the type of special use facility. Examples of such recreational space would include nature parks, athletic field complexes, amphitheater, equestrian facilities, etc.

NATURAL RESOURCE PARKS - These are natural areas that are set-aside as scenic buffers or preservation. They are intended for limited passive recreation opportunities.

LINEAR PARKS/GREENWAYS -These are the connectors that link the park system together as well as to other neighborhoods and cultural amenities. Width varies to accommodate specific user, site requirements, and safety needs.

COMPARISON OF PARK ACREAGE TO ADOPTED STANDARDS - PROJECTIONS FOR 2019 AND 2024

In order to assist the City in acquiring additional parkland to meet the needs of a growing population, the following tables have been developed. Each table reflects a desired acreage amount per 1000 unit of population for each park classification group. These desired acreages are compared to existing park acreages within the City limits. The differences between the existing and desired acreages offer a guideline for the years 2019 and 2024, and provide the City of Dripping Springs with a systematic park acquisition goal to meet the needs of the population.

EXISTING AND UNDEVELOPED PARK LAND ACREAGE – CITY OF DRIPPING SPRINGS

This table documents parkland inventory acreage as indicated in 'Section 5 - Inventory' of this master plan, including one proposed parks (parkland that is owned by the City but not yet developed).

Park Classification	Existing Parks	Acreage
Mini Parks	Veterans Memorial Park	3.71
	Total Ornamental Parks Acreage =	3.71
Neighborhood Parks	Total Neighborhood Parks Acreage=00.00	
Community Parks	Founders Memorial Park	40.00
	Sports and Recreation Park	40.00
	Arrowhead Park (undeveloped)	13.58
	Total Community Parks Acreage=	93.58
Special Use Parks	Dripping Springs Ranch Park	110.00
	Total Special Use Parks Acreage=	110.00
Natural Resource Parks	Charro Ranch Park	64.00
	Total Natural Resource Parks Acreage=	64.00
Linear Parks/Greenways	Total Linear Parks / Greenway Acreage=	0.00
TOTAL PARK ACREAGE=271.29		

City of Dripping Springs / ETJ Park Acreage Guidelines

Park Facility	Existing 2014 Population of 21,313~ Existing Parks AC/1000	Guidelines for 2019 Population of 24,985~ Suggested AC/1000	Guidelines for 2024 Population of 29,289~ Suggested AC/1000
Mini Parks	3.71 .18 ac/1000	3.71 .15 ac/1000	3.71 .13ac/1000
Neighborhood Parks	0.00 0.00 ac/1000	0.00 0.00 ac/1000	0.00 0.00 ac/1000
Community Parks	93.58 4.39/1000	93.58 3.74ac/1000	143.58 4.90 ac/1000
Special Use Parks	110.00 5.16 ac/1000	110.00 4.40 ac/1000	110.00 3.75 ac/1000
Natural Resource Parks	64.00 3.00 ac/1000	64.00 2.56 ac/1000	64.00 2.18ac/1000
Totals	271.29 12.73 ac/1000	271.29 10.85 ac/1000	321.29 10.96 ac/1000

~ - Source: A 3.23% population growth was used in this ETJ population projection, starting with a 2012 population benchmark of 20,000. This benchmark was based off of the population determinations of Jon Thompson, Planning Director of the City of Dripping Springs. The population growth percentage matches the (.5) 2000-2010 migration projection growth for Hays County as determined by the Texas State Demographers Office.

Note: "Neighborhood Parks" as referenced above indicate City of Dripping Springs owned and maintained neighborhood parks. The guidelines for this type of park facility suggest 0 acres of neighborhood parks in the future; however, this is for City of Dripping Springs owned and maintained neighborhood parks only. The current and historical neighborhood park development model for the City has been for private developers to develop and maintain (or have a HOA maintain) neighborhood parks that serve their development. This neighborhood development model will continue to be the method for providing neighborhood parks to residents in Dripping Springs; however, these future private neighborhood park acreages are not reflected in the City Owned "Neighborhood Park" acreages indicated on this table.

FACILITY BASED GUIDELINES

As shown below, information from the NRPA guidelines is listed along with facility development guideline recommendations from LUCK Design Team specific to the City of Dripping Springs. The recommendations from LUCK Design Team refer to facilities that were not covered in the NRPA recommendations. Proposed facility guidelines are for fiscal years 2019 and 2024.

Dripping Springs Park Facility Guidelines

Activity / Facility	Guidelines Recommended For Facilities Per Population	Facilities In Dripping Spr. Pop. of 21,313~	Facilities Proposed For 2019 Pop. of 24,985~	Facilities Proposed For 2024 Pop. of 29,289~
Amphitheaters	1/20,000^	0	0	0
Baseball Fields	1/5,000*	1	2	6
Basketball Goals (outdoors)	1/5,000*	0	0	0
Benches	1 bench/400^	27	35	40
Disc Golf	18 holes/20,000^	0	0	0
Fishing Areas/ Docks	1/10,000^	0	0	0
Football Fields	1/20,000*	2	2	2
Golf Course	1/50,000*	0	0	0
Pavilion/Shelters	1/2,000*	1	4	8
Picnic Tables	1 table/300*	53	70	95
Playgrounds	1 area/1,000*	4	6	9
Recreation Centers	1/20,000-30,000*	0	0	1
Skate Parks	1/20,000^	0	0	0
Soccer Fields	1/5,000*	5	5	7
Softball Fields	1/5,000*	3	3	6
Splash Pads	1/10,000^	0	1	2
Swimming Pools	1/20,000*	1	1	1
Tennis Courts	1/5,000*	0	0	0
Trails	1/2-1 mile/1,000*	4.68	8.00	12.00
Volleyball Area (outdoors)	1/5,000*	1	1	3

* - Source: Guidelines from Appendix A in Recreation, Park and Open Space Standards and Guidelines, p. 60-61, 4th printing 1990, a publication of the National Recreation and Park Association.

^ - Source: LUCK Design Team professional recommendation for the City of Dripping Springs.

~ - Source: A 3.23% population growth was used in this ETJ population projection, starting with a 2012 population 20,000. This benchmark was based off of the population determinations of Jon Thompson, Planning Director of Dripping Springs. The population growth percentage matches the (.5) 2000-2010 migration projection growth as determined by the Texas State Demographers Office.

8. PARK NEEDS IMPLEMENTATION PLAN

The most important part of any parks, recreation and open space master plan is the identification of the priorities through inventory analysis, needs assessment, public input, and suggestions from the Parks & Recreation Commission and City Staff. Once this process is completed, the establishment of an implementation program is the next step.

This section outlines a 10-year implementation and action plan focused along three congruent tracks: outdoor facility improvements, indoor facility improvements and acquisition of future community park land

OUTDOOR RECREATION FACILITY IMPROVEMENTS

The first part of the implementation plan focuses on outdoor facilities. Questions Eight and Nine of the needs survey focused on identifying needs for park facilities and amenities. The design team tabulated the surveys, reviewed the results and developed the following list of priorities (see right).

Of special note, a preliminary list of “Outdoor Recreational Facility Priorities” was presented to the Dripping Springs Parks and Recreation Commission on November 10, 2014. This meeting was also attended by over eighty skate park enthusiasts and included a presentation by residents on the need to explore a potential skate park in the Dripping Springs area. These supporters advocated moving skate parks higher up on the priority list (it was previously shown as a “low priority” based on survey results - see page 31 - and previous dialogue with the Parks and Recreation Commission) and the creation of a Skate Park Advisory Board to further vet the need and feasibility of a skate park in Dripping Springs. Based on the public input received at this meeting, “Skate Parks” were moved higher up on the priority list. An Implementation Action Item was also included to create a Skate Park Advisory Board in conjunction with the Dripping Springs Parks and Recreation Commission.

A representative of the “Friends of the Pound House” also spoke at the November 10, 2014 Dripping Springs Parks and Recreation Commission meeting. He spoke of the need to preserve the Pound House and the farmstead’s historic setting, enhance the attractions within Founders Memorial Park, and encourage increased visitation and use of Founders Memorial Park.

OUTDOOR RECREATIONAL FACILITY PRIORITIES:

High Priorities

- Walking / Hiking / Biking Trails
- Natural Areas and Open Space
- Playscapes / Playgrounds
- Water playscape / Splash Pads

Medium Priorities

- Skate Park
- Dog Park
- Baseball Fields
- Equestrian / Livestock Arenas
- Fishing Access Areas
- Multipurpose Spaces (Sports)
- Soccer Fields
- Tennis Courts

Low Priorities

- Wildlife Viewing Areas
- Amphitheater
- Football Fields
- Community Gardens
- Indoor Pools
- Pavilions / Shelters
- Picnic Areas
- Basketball Courts
- Softball Fields
- Botanical Gardens
- Lacrosse Fields
- Disc Golf
- BMX Track
- Volleyball Courts

After further discussion on this topic, Park and Recreation Commissioner's urged the creation of an "Advisory Committee on the Preservation, Enhancement and Use of Founders Memorial Park" to be included in the Parks Implementation Action Plan. This request has been included as an action item under Item 2: Natural Areas and Open Space on page 39 of this document.

At the Dripping Springs Parks and Recreation Commission meeting on January 26, 2015, a representative of the Dripping Springs Farmers Market Association (DSFMA) spoke to the Commission about the creation of an advisory committee for Veterans Memorial Park/The Triangle. This advisory committee would collect information, study, and make recommendations to the Parks & Recreation Commission and City Council regarding the needs of Veterans Memorial Park/The Triangle.

The Park and Recreation Commissioners directed that the creation of an "Advisory Committee for Veterans Memorial Park/The Triangle" be included in the Parks Implementation Action Plan of this plan. This request has also been included as an action item under Item 2: Natural Areas and Open Space on page 39 of this document.

INDOOR RECREATION FACILITY IMPROVEMENTS

Throughout the parks needs assessment, indoor recreation facility priorities ranked as a medium park and recreation need.

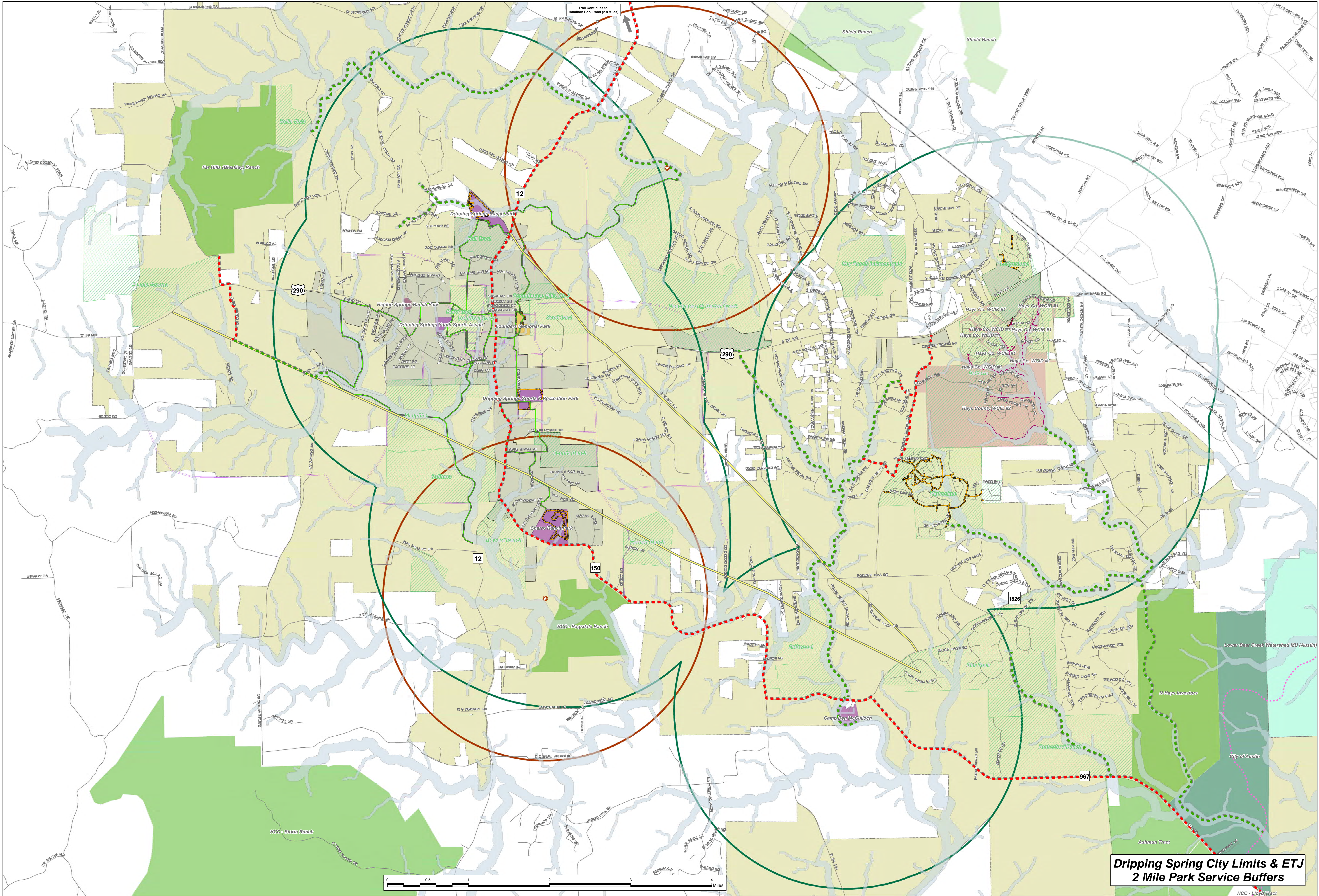
Providing indoor recreation facilities is deemed a "priority" for the City; however, these facilities have a large infrastructure development cost and maintenance cost. The City has a plan to review the potential of pursuing public/private partnerships to meet this community need. The City does not have the capital resources or personnel available to adequately fund and staff indoor recreation facilities needs with its current budget allocation.

ACQUISITION OF FUTURE COMMUNITY PARK LAND

Highlighted throughout the development of this master plan are the high levels of use the two existing community parks bear in serving the City and surrounding ETJ community. In order to alleviate the overcrowding at these two parks, the acquisition of future community park lands is considered a must.

The map on the proceeding page highlights two potential areas for the location of future community park lands and their 2-mile service radius. These locales are not meant to identify any particular parcel or tract of land but to highlight the desire for additional park lands to be located along the Ranch Road 12 corridor should land become available in these areas.

Action item number 2 of the Parks Implementation Action Plan emphasizes further exploration of the vision for adding more Community Park lands to the City's infrastructure.



Open Space Master Plan Dripping Springs, TX

This product is for informational purposes only and may not have been prepared for or be suitable for legal, engineering, or surveying purposes. It does not represent an on-the-ground survey and represents only the approximate relative location of property boundaries.

Legend - 1" = 2000'

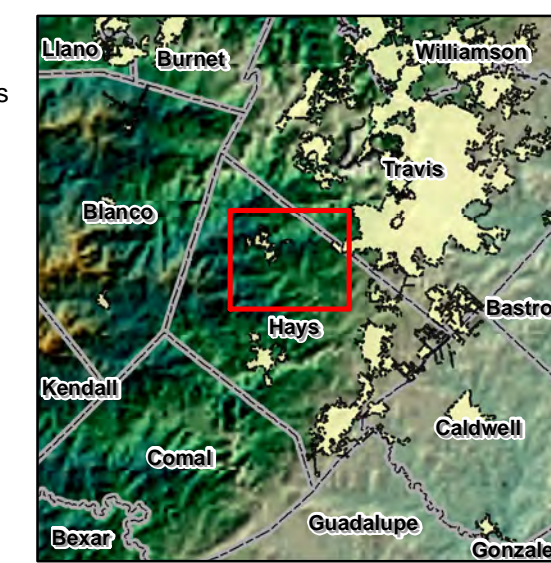
Phase
Developer Trails
On Road Proposed
Off Road Proposed
Utility Easement

HCC Violet Crown Trail
Adopted Trails
Existing Off Road Trails
Water Quality Buffer Zones
Potential Subdivisions
Future Transportation Plan
Regional Texas Roads

Parks & Openspace LAND TYPE
Community Park
County Park
Conservation Easement
County Park
WCID/ MUD Park
Water Quality Lands
Greenspace
HOA/ Pocket Park

Hike/ Bike Trail
Natural Area/ Preserve
Park
Undefined
WCID/ MUD Park
Water Quality Lands
2 Mile Service Buffer - Parks
Potential Future Community Park
2 Mile Service Buffer - Potential Future Community Park

Dripping Springs City Limits
Dripping Springs ETJ
Hays County Boundary



PROJECT NO.
1969-2-002-20

Luck Design Team
DS Master Plan

LUCK DESIGN TEAM

Date: March 23rd, 2015

BAKER-AICKLEN & ASSOCIATES, INC.
100 WEST LIBERTY AVE.
SUITE 200
DRIPPING SPRINGS, TX 78620
737.681.1111
WWW.BAKER-AICKLEN.COM

City of Dripping Springs

PARKS IMPLEMENTATION ACTION PLAN

Outdoor Facility Improvements	Implementation and Action Items
<p>Years One Thru Five</p> <p>HIGH PRIORITIES</p> <p>1) <u>Walking / Hiking / Biking Trails</u></p> <p>2) <u>Natural Areas and Open Space</u></p> <p>3) <u>Playscapes / Playgrounds</u></p>	<p>Develop a Trails Master Plan to include all of the service area indicated in the Parks, Recreation and Open Space Master Plan.</p> <p>Strengthen the City's parkland dedication ordinance to include connectivity of parks and open space in master planned communities to the City's overall trail network.</p> <p>Provide trail (softscape) and paths (hardscape) connectivity to cultural amenities within the City: to parks, City Hall, City Library, etc.; investigate power line easements for potential trail corridors.</p> <p>Construct accessibility compliant sections of paths to park components at each park.</p> <p>Develop a long range vision for the addition of community park lands in the north central area of Dripping Springs (potentially in the general area of the Headwaters planned residential area) and in the south central area (potentially in the general area of the confluence of North Onion Creek and South Onion Creek); establish a dedicated account for the purchase of land for these future community park areas.</p> <p>Create an "Advisory Committee on the Preservation, Enhancement and Use of Founders Memorial Park" consisting of two members of the board of the Friends of the Pound House Foundation, two members of the Parks and Recreation Commission, and two to three public members appointed by the city representing the city and ETJ. The purpose of this committee will be to review and make recommendations on any plans, projects or enhancements impacting Founders Memorial Park, the Pound House Farmstead and Museum, and their environs.</p> <p>Create an "Advisory Committee for Veterans Memorial Park/The Triangle". The advisory committee will collect information, study, and make recommendations to the Parks & Recreation Commission and City Council regarding the needs of Veterans Memorial Park/The Triangle</p> <p>Start an annual playground audit program.</p>

City of Dripping Springs

PARKS IMPLEMENTATION ACTION PLAN

Outdoor Facility Improvements	Implementation and Action Items
4) <u>Water Playscape / Splash Pads</u>	Investigate the possibility of adding a water splash pad at Founders Park.
MEDIUM PRIORITIES	
5) Skate Parks	Create a “Skate Park Advisory Committee” in conjunction with the Dripping Springs Parks and Recreation Commission to explore the need and feasibility of a skate park in Dripping Springs.
6) Dog Park	Items 6-26 ranked as medium and low priorities during the needs assessment process. These amenities and their priorities ranking will be re-evaluated after five years; however, a specific action item for all the amenities of the City’s park system is to establish a line item in the City’s annual budget dedicated to fund existing park amenity item replacement. This will assist in securing that the Park Objective No. 2 of this master plan (“Establishing a level of high quality parks throughout the City, in particular by upgrading and maintaining the existing City of Dripping Spring’s Parks to the highest level”) is achieved.
7) Baseball Fields	
8) Equestrian / Livestock Arenas	
9) Fishing Access Areas	
10) Multipurpose Spaces (Sports)	
11) Soccer Fields	
12) Tennis Courts	
LOW PRIORITIES	
13) Wildlife Viewing Areas	
14) Amphitheater	
15) Football Fields	
16) Community Gardens	
17) Indoor Pools	
18) Pavilions / Shelters	
19) Picnic Areas	
20) Basketball Courts	
21) Softball Fields	
22) Botanical Gardens	
23) Lacrosse Fields	
24) Disc Golf	
25) BMX Track	
26) Volleyball Courts	

APPENDIX

Dripping Springs Parks, Recreation, Open Space & Trail Master Plan Survey

Public Comments from Community Survey Question Number 8

Public Comments from Community Survey Question Number 9

Additional Information from Community Survey Question No. 11

Neighborhood Park Amenities and Associated Range of Costs

Community Park Amenities and Associated Range of Costs



Dripping Springs Parks, Recreation, Open Space & Trail Master Plan Survey

The City of Dripping Springs is currently preparing the Dripping Springs Parks, Recreation, and Open Space Master Plan (Plan). Public input is an important portion of the Plan. To ensure the public has an opportunity to voice their opinion, City officials ask citizens living within the City of Dripping Springs, the Dripping Springs Extra Territorial Jurisdiction, and Dripping Springs Independent School District to participate in a short 21-question survey. Answering survey questions will allow individuals to express opinions, wants, and needs regarding City owned and managed parks, the future development of open space in Dripping Springs, and recreational programs.

The City produced the previous Dripping Springs Parks, Recreation and Open Space Master Plan in 2007. That plan drove substantial improvements in all city parks, including the Dripping Springs Ranch Park land acquisition and many other improvements.

Please complete this survey by indicating the answers that best reflect your attitudes and opinions.

Your opinion is important and the City would like to thank you for taking the time to complete the survey.

1) How often have you or members of your household visited the City parks listed below or used recreation facilities in Dripping Springs in the last year? (Multiple answers may be indicated.) *(Please indicate one answer.)*

	How often do you visit parks in Dripping Springs?	Once a week	More than once a month	Once a month	Two or more times during the year	Never
A	Charro Ranch Park					
B	Dripping Springs Ranch Park					
C	Founders Memorial Park					
D	Sports and Recreation Park					
E	Veteran's Memorial Park					

2) How would you rate the physical condition of the parks in Dripping Springs? *(Multiple answers may be indicated.)*

	Excellent	Good	Fair	Poor	Don't Know / Not Familiar
Charro Ranch Park					
Dripping Springs Ranch Park					
Founders Memorial Park					
Sports and Recreation Park					
Veteran's Memorial Park					

3) Overall, how would you rate the parks and recreation opportunities in Dripping Springs?
(Please indicate one answer.) *(Please indicate one answer.)*

	Excellent	Good	Fair	Poor	Don't Know / Not Familiar
Parks and Recreation Opportunities					

4) From the list below, please mark the top four ways you learn about parks and recreation activities offered in Dripping Springs? *(Indicate only four answers.)*

City website		City Newspaper – "The New Dispatch"/ "The Century News"	
Radio		Calling/talking to City Park employees	
Television		Social Media (twitter/Facebook/etc.)	
Word of Mouth		Notifications posted at Park Facilities	
		Local \ Other Websites	

Other (List): _____

5) If you selected "social media" in Question 4 as one of the top four ways you learn about parks and recreation activities offered by the City of Dripping Springs, which social media platform do you prefer? *(Indicate only one answer.)*

Facebook	
Twitter	
YouTube	
Instagram	
Pintrest	

_____ Other (List): _____

6) Does the City have enough parkland? *(Please indicate one answer.)*

Yes		No		Don't Know /Not Familiar	
-----	--	----	--	--------------------------	--

If you answered "No" where do you think new parks are needed? For example, write in "Area 1" if you think more parkland is needed in Area a as shown on the map below.

7) Would you support a Bond Election for funds to develop new and existing public parks and recreation facilities?

Yes		No		Maybe	
-----	--	----	--	-------	--

8) Currently, the city park system serves almost 25,000 people in the Dripping Springs area. Most of the financial support for park development and maintenance

9) What is the single most important issue or need concerning City of Dripping Springs parks or recreation programs? (Write in any comments.)

10) From the FACILITIES listed below, please indicate how well you or someone in your household feels this need is currently being met in existing parks in Dripping Springs. (Please indicate one answer for each program activity for each activity.)

This need is:	Fully Met; No Additional Facilities are Needed	Nearly Met	Half Met	Somewhat Met	Not Met At All	No Opinion
Baseball Fields						
Softball Fields						
Soccer Fields						
Football Fields						
Basketball Courts						
Lacrosse Fields						
Tennis Courts						
Volleyball Courts						
Skate Parks						
BMX Track						
Bicycle Trails						
Dog Park						
Disc Golf						
Playscapes/Playgrounds						
Pavilions/Shelters						
Picnic Areas						
Walking/Hiking Trails						
Natural Areas & Open Space						
Wildlife Viewing Areas						
Fishing Access Areas						
Community Gardens						
Botanical Gardens						
Amphitheater						
Equestrian/Livestock Areanas						
Water playscapes/Splash pads						
Outdoor Pools						
Indoor Pools						
Senior Center						

11) From the **FACILITIES** listed in Question 10, please indicate the top three that are the most important to your household? *(Write in your preference below.)*

_____ 1st _____ 2nd _____ 3rd

12) Please list any **FACILITIES** not noted in the survey that the City of Dripping Springs should consider constructing in the future. *(List & write in any comments.)*

13) From the **PROGRAMS & ACTIVITIES** listed below, please indicate if you or someone in your household has a need for each of the activities or recreational programs. *(Please indicate yes or no for each activity.)*

This need is:	Fully Met; No Additional Facilities are Needed	Nearly Met	Half Met	Somewhat Met	Not Met At All	No Opinion
Youth Summer Camps						
Youth Sports						
Adult Sports						
Outdoor Adventure Sports						
Equestrian and Livestock Activities						
Fitness & Wellness						
Senior Programming						
Visual & Performing Arts						
Creative Arts & Crafts						
Swimming & Aquatics						
Indoor Recreation						
Music in the Park						
Movies in the Park						
Nature Education						
Birding / Wildlife Viewing						

14) From the **PROGRAMS & ACTIVITIES** listed in Question 13, please indicate the top three that are the most important to your household? *(Write in your preference below.)*

_____ 1st _____ 2nd _____ 3rd

15) Please list any **PROGRAMS/ACTIVITIES** not noted in the survey that the City of Dripping Springs should consider providing in the future. *(List & write in any comments.)*

About you:

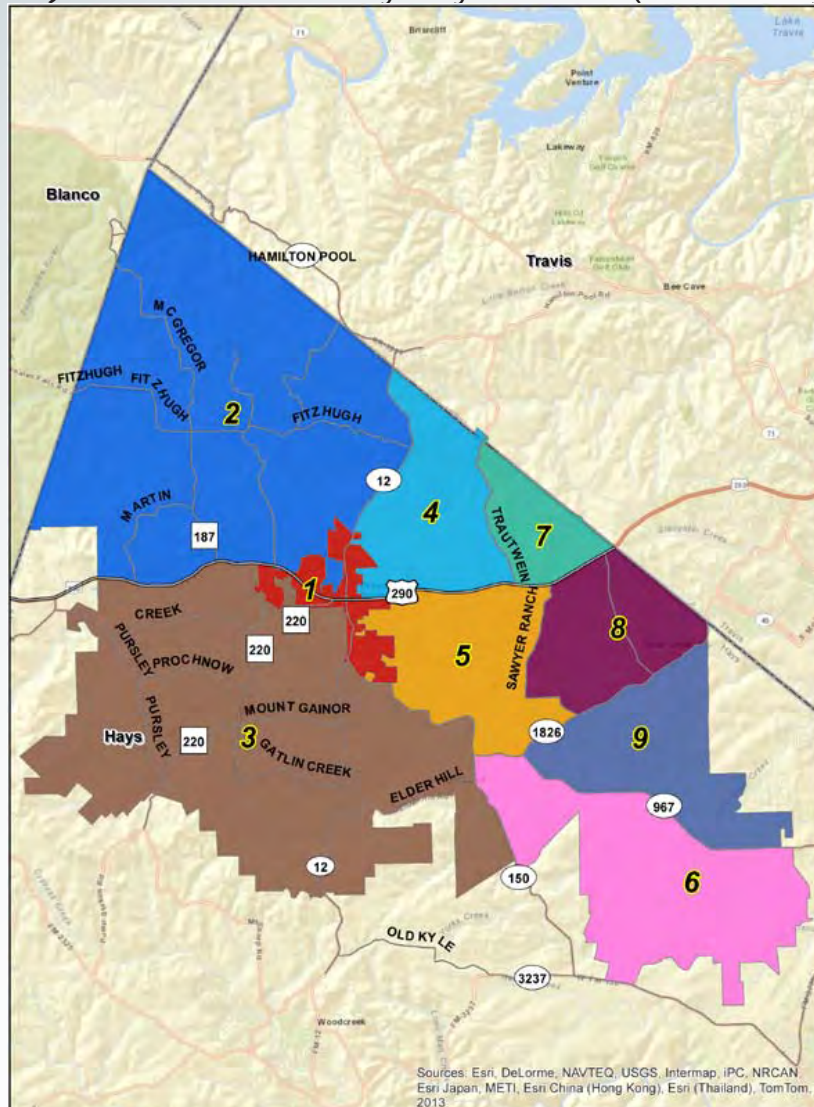
16) I am **Male** / **Female**

17) I **Own** my home / **Rent** my home

18) I have lived in Dripping Springs for _____ years. *(Indicate only one answer.)*

A	Less than a year	
B	1 – 5 years	
C	6-10 years	
D	11-20 years	
E	21 + years	

19) Which area of the City do you live in? *(Indicate only one answer.)*



20) I am: *(Indicate only one answer.)*

A	Employed full-time	
B	Self employed	
C	Employed part-time	
D	Unemployed	
E	Homemaker	
F	Student	
G	Retired	

21) Including yourself, indicate the NUMBER of people in your household who are in the following age categories. *(If none, write "0".)*

Under 6 yrs		25-44 years	
6-12 years		45-64 years	
13-18 years		65 yrs & older	
19-24 years			

THANK YOU FOR YOUR PARTICIPATION IN THIS SURVEY. YOUR INPUT WILL HELP DEVELOP THE FUTURE VISION FOR PARKS AND RECREATION IN THE CITY OF DRIPPING SPRINGS.

APPENDIX

ADDITIONAL COMMENTS RECEIVED FROM THE NEEDS SURVEY

QUESTION 8:

Currently, the city park system serves almost 25,000 people in the Dripping Springs area. Most of the financial support for park development and maintenance is shouldered by the 2,000 residents who live within the Dripping Springs city limits. What is the best way for non-city limit residents to assist the City in funding and maintaining the City parks?

1. Volunteer fund drives, Greens fee(s) if golf course available.
2. Annual fund raising or city money.
3. Bond.
4. Fund-raisers directed at non-residents visiting/using the parks.
5. Sales tax? Usage fees for non-residents?
6. Annual pass/fees.
7. Entrance / usage fee - daily or annual sticker options.
8. Bond Issues.
9. Good question.
10. Membership.
11. Charge admission/usage fees.
12. Fund raising for each different projects. Example: lights for soccer fields or benches/parking Veterans park.
13. Tax revenue.
14. Special district tax.
15. Incorporate people from the MUD (e.g. Belterra) into the city of Dripping Springs.
16. A small fee passed on through DSYSA sports fees or, if the County Tax Assessor would allow it, an optional donation box on the property tax form.
17. Special taxing districts, applicable only to the residents in the areas where the parks are located; user fees.
18. Donations.
19. I live in the ETJ and am a parent that Pays for children to play DSYSA sports which I know a portion of my registration fee goes to park maintenance.
20. Donations, fund raisers, volunteering.
21. The residents that live in the ETJ don't get to be part of the discussion, voting, etc. so don't expect us to be part of the solution. I don't use DS parks.
22. Donations/fund raisers.
23. Expand city limits?
24. Fund raising events & activities.
25. Reasonable yearly membership fee for non Dripping Springs Residents.
26. Not sure how, but everyone needs to be included in funding!
27. Entry fees; possibly excusing residents within the city limits from having to pay again.
28. ETJ park tax.
29. Taxing all the residents.

30. Pay a use fee.
31. Give the people who are in your ETJ real rights, like voting for city council, and then you can tax them, if they wish. Otherwise, this is simply taxation without representation and we fought a war over this.
32. The best way would be for the city to incorporate some of the ETJ areas so there would be residents to shoulder the costs.
33. Fee on Property taxes or incorporation.
34. Maybe by paying an annual park entrance fee, similar to a "Beach Permit" to be placed on cars.
35. Memberships for families or organizations, depending on the organizations current commitment to the maintenance of parks.
36. Pay a park entrance fee depending on non-city limit residents use; e.g., daily fee / monthly / yearly.
37. Build a large, resort style, family oriented swimming pool, like the Lakeway swim center, charging a little more for non-residents. Build a city operated RV resort to generate funds for park development. Events during the other seasons (movies in the park, festivals, etc. should be free of charge, but invite donations.
38. Not true, the whole area pays sales tax when shopping in DS.
39. Fund raisers at the parks would be a great idea with concerts and events etc. It would also get people out to the parks to check them out.
40. The parks could an entrance fee to offset the costs.
41. Park user assessment via issuance of fee based user tags.
42. Fee yearly.
43. Incorporation.
44. Entry fees are probably best.
45. By giving us the right to vote on all issues, including Mayor and other public offices.
46. Volunteer, Donations, etc.
47. Good question!
48. Fund raising.
49. User Fees/Annual Pass.
50. Fund raisers.
51. Annual fee for pet licenses (automotive?) Donation box on (local) election ballots.
52. County bonds or other county funding means.
53. Fund Raisers, connect with other groups who have similar interests - nature, sports etc.
54. Tax the ETJ people who are probably using these facilities - perhaps a survey of who uses them Bike.
55. Raise the city sales tax by .02 ???
56. Expand the city limits to more realistic boundaries. Bond elections.
57. Ask for donations. Also, consider having a concession stand to sell items at large events.
58. The Hays Co. Master Naturalist log many hours of maintenance and upkeep. Get other groups to help.
59. Specific purpose fund drives, like for bird blinds.
60. Fees.
61. Activity fees.
62. County tax.

63. The city of Dripping Springs pay for it.
64. Making known volunteer opportunities/commitments.
65. Have local businesses help fund the improvements (larger businesses like HEB, Home Depot, etc) in exchange for signage/naming rights in areas of the park (children's play area, trails, dog park, etc).
66. Minimal entrance fee for non-residents.
67. Yearly assessment.
68. Entrance cost.
69. Reasonable user fees.
70. Note a fee/percentage for non-city residents under school taxes. These areas are majorly utilized by school aged people. Have the schools do service work in these areas, they could even note this as school credit in someway. Do quarterly cleanups and restoration.
71. Use fees, events.
72. City already gets their sales tax dollars so there is no need for any additional mechanism. As more retail outlets settle in the ETJ, DS will have a disproportionate increase in sales tax revenue to its expenses.
73. Sales taxes on the businesses in Dripping. More developments in Dripping of single family housing which in turn would generate more taxes.
74. Not sure.
75. If you expand the public parks in non-city limit areas, a bond would be needed to support the funding and maintaining of those public spaces. It's a MUST to maintain green areas and not just park spaces in housing developments. Lighting trespass has become a huge issue in the western part since the addition of an unregulated baseball field development off Creek Road. It has ruined the night sky for many residents as well as downgraded property values. Careful consideration of what eco-friendly additions must be made to any public park and recreation area in our lovely hill country to keep the night sky full of stars and our lands and waterways clean.
76. More awareness and fund raisers. I live off of Nutty Brown Rd. DS schools/Hays Co. I hardly ever hear of gatherings in DS. Notice hanging signs when driving through.
77. Fund raising through donations for improvements within the parks that currently exist.
78. Park entrance fees; fund raising events; event hosting.
79. Annex more neighborhoods into the city. Charge sports leagues for use of the parks (may be doing so already?).
80. Volunteer. Have events for non-city residents to participate in.
81. Tax those of us in the outlying areas.
82. Entry fees.
83. Even though financial support comes from within the city limits, the sheer numbers of student volunteers, and adult volunteers do NOT live in the City Limits. Start paying for labor and you have a new financial crisis. Volunteers are your biggest base for cleaning up, adding new attractions (think Eagle Scout project), maintaining paths. Have a once a year "clean-up" party and after 3-5 hours, have a cook-out for the volunteers.
84. Park entry fee.
85. Admission at gate.
86. The City can sponsor fund raising events or charge non-city residents higher fees for programs, etc.
87. Usage fee.

88. Annual budget voting.
89. Ask people to donate to good projects and hold fund raisers.
90. Entrance fee?
91. Pay fees, volunteer to work, etc.
92. Hays County needs to get involved in the construction & maintenance.
93. Volunteer programs and fund raisers.
94. Pay for classes and recreation opportunities that they use.
95. Costs should be covered by those using the space.
96. By supporting DS city businesses to increase Local Sales tax revenue\
97. Maybe a yearly pass.
98. First of all, it is hard to believe your statement is accurate. I am not a resident but pay a LOT of property taxes and sales tax. One answer is to expand the city limits greatly.
99. I don't know but charging fees to use the parks is not the answer.
100. Levy a small tax to help fund.
101. Give residents park permits. So anyone without a park permit has to pay for a park pass.
102. Commercial tax revenue
103. Bond package.
104. Call for volunteer work days. Call for local businesses who want recognition to donate goods/services. The City of Austin uses volunteer work days several times a year for their parks system. Everything from litter pick up to landscaping to tree planting...Folks like to help and take pride in their community. Give them an opportunity.
105. Entrance fees.
106. Membership.
107. I am mystified by the fact that non-city residents can't participate in city affairs. That door swings both ways - we should participate in funding, but we should also be allowed to vote. Are we not as impacted by the decisions our elected officials make as the city residents? Heck yeah!
108. Annual park pass? Or entrance fee.
109. Don't know.
110. Charge a fee to get in.
111. Fees to non city limit parks.
112. Fund raising drives for large projects; I would support some sort of fee/tax for the ETJ; Hold more events at our parks with admission as fund raisers.
113. Donations. Taxes.
114. Charge minimal admission; let the people who use the parks pay for them.
115. Annex more into the city of course - before Lakeway or Bee Caves or Austin does.
116. Park passes.
117. Many of the non-city limit residents support the City through taxes paid at City businesses.
118. Fund raising
119. County funds, volunteering, Increased usage fees for non-residents.
120. Donations. Could Dripping Springs annex some of the other non city areas?
121. Maybe non-city limits visitors could pay higher entry fees.
122. Give us a vote!
123. Extend the ETJ so as to be able to tax the non-city limit residents who use the parks.
124. Small fee for non residents.
125. Have bar-be-cue fund raisers in the parks, and include take-out plates.

126. Usage and parking fees, administered and collected on site by City of Dripping Springs.
127. Donations.
128. Not sure.
129. Park use fees
130. What about an added \$.01 sales tax increase for the City of Dripping Springs - the ones of us that shop in D.S. plus others shopping here can help support the parks.
131. The city limits need to be expanded to the citizens it serves. I do not understand how some (at least one) neighborhood got city water but then was put in the city limits as a requirement. Obviously this happened years ago.
132. Fund raisers for improvements to existing parks (ex. Founders swimming pool), scheduled activities at parks to encourage usage.
133. Park passes/fees.
134. Sales tax.
135. Improvement campaigns, fund raising.
136. If you live outside the city you pay little more for kids sporting events. For example if you play soccer/baseball/football in the DSYA ... pay extra \$5 park fee.
137. Taxes.
138. Entry Fee/Annual Park Pass - Like Travis County Parks: Emma Long, Reimers, Hamilton Pool.
139. Expand where they are located and charge DSISD residents.
140. Sales taxes.
141. Flat fee annual park passes with small fees for additional license plate #'s on the hanger.
142. Maybe something on the property taxes.
143. Consider annual usage fee for non DS City taxpayers.
144. Unknown.
145. Give residents not within the city limits the right to serve on the city council.
146. Spend collected monies on project(s) money is designated for rather than investing those monies.
147. Sales tax from non-city limit residents frequenting local businesses.
148. Extend tax base, or apply small use fee.
149. Don't know.
150. User fees? What is the budget? Hard to give an idea when not sure of the existing expenses.
151. Don't know
152. Don't know.
153. ?
154. Small entry fees for events. I really doubt that many of us in the ETJ make much use of the facilities other than to occasionally attend the farmer's market or the Founders Day festivities.
155. Not that familiar with parks.
156. How do other cities that have this problem handle it?
157. Event admission fees, fund raising campaigns.
158. A low park entrance/usage fee
159. There has to be Federal dollars available Corporate support; fees to use parks for specific types of events.
160. Fund raising. Entry fee to pools. Volunteers
161. Buy an annual pass.

162. Extend the opportunity for use beyond the City limits with connecting bike trails to private areas like Belterra, Saddletree, Sawyer Ranch. Connectors would open up the use of the parks to all those residents and help to raise awareness of the need for funding.
163. Make it inclusive with all Hays/DSISD residences.
164. Charge a fee for various park activities or for park usage.
165. Expanding to all DSISD.
166. Surrounding areas outside of the city limits to provide support.
167. Fund raising?
168. Park user fees.
169. Admittance and/or parking passes.
170. Do not know.
171. Pay a fee for park use.
172. Require ALL new subdivisions to pay a park fee. Do not allow a subdivision to dedicate moneys for improvements to a particular park.
173. User fees, county support.
174. Private funding and use fee by individuals.
175. Use of current available resources, no new Taxation. Also, corporate and donations.
176. Solicit corporate sponsorships; create friends of the parks fund raising organization to solicit donations, apply for grants and hold special events to raise funds; charge higher fees to people who live outside the City Limits.
177. Entry fees/usage fees for non residents.
178. ?
179. Purchase annual access permits!
180. Grants from TPWD; generous donations from giant retailers in the City of Dripping Springs; user fees...
181. Sales tax or property tax.
182. Private donations.
183. Have the Precinct 4 county staff work toward getting funding from the county since that's where most of the people live.
184. Not sure, I would look into how other communities handle that situation
185. Through taxes
186. As I understand it, you also get county funds, which are from our taxes.
187. Peak fee and donations.
188. Those 25,000 people in the DS area are not all using the parks. Nor are the 2,000 residents in the DS city limits. The DS City Council needs to figure out how to address this issue and consider parks and green space needs for their 2,000 residents.
189. Get \$\$ from the county as support.
190. Do not have only the city of dripping springs vote for these things. Anyone who is with-in the DSISD area should vote on these types of things.
191. Fund raising,donations, sponsorships, volunteers and existing tax funds.
192. I would gladly pay more taxes if there were parks in ETJ, not just more environmental destruction, also known as "development".
193. You need to tell them what you need. I don't think I have ever seen anything asking for support other than the normal functions at the park.
194. County Taxes.
195. DSISD tax.

196. User fee?
197. Let non-residents, but jurisdictional, vote in city elections
198. Expand the city limits to include sub-divisions bordering the city limits such as Meadow Oaks.
199. Pay for use fee. Sales Tax on goods/services within ETJ. Bond election.
200. Crowd source fund raising online. Other specific fund raising events.
201. They shouldn't. This is a city resource and the city should pay for it.
202. Small fee (\$2.00) to get into Founders Day
203. User fees.
204. Fee for use.
205. Sales tax.
206. User fee
207. Fund raising.
208. Donations.
209. Paid access for non city residents... Local fun raisers, selling access cards at farmers market
210. THEY ALREADY PARTICIPATE IN FUND RAISING. (MONEY THAT GETS BOONDOGGLED BY THOSE VOTED IN BY 2000).
211. Entrance Fees.
212. Annexation. City sales tax.
213. Rental fees, camping and usage fees, teeny increase in prop. taxes for those in DS school district, etc. Spread it out.
214. Entrance fees
215. Sale of memberships or daily usage fees.
216. Incorporate more land.
217. Charging a daily admission fee on a per vehicle basis, which will allow you to get into any of the DS parks, like Travis County does.
218. Fund raising events and activities.
219. All users should pay something if they are utilizing the resources
220. Expand the city limits to include more people.
221. No suggestions.
222. Ceding infrastructure where available to the city.
223. I don't know. County taxes, perhaps?
224. Donation.
225. Fund raisers. Not specific to One park, but let the donor decide where the money will go
226. Tax.
227. The only thing left would be to raise property taxes, but I'm pretty sure mine are high enough as it is...
228. Park usage fees, admission fees for special events.
229. Park membership.
230. Maybe special events at the parks where they need money. The people that USE the parks need to support them.
231. Get our schools involved. Ex: clean up days that classes could participate in.
232. Give them the vote. The ETJ vs. City of Dripping Springs arrangement makes little sense.
233. Participate in fund raisers. EX-give a \$1 or \$2 checking out at HEB.
234. Use fees.
235. Taxes.

- 236. Host fun runs/rides to raise funds for the parks - and advertise these opportunities to the residents of Southwest Austin that use the facilities :).
- 237. Taxes?
- 238. Permits -- not extremely expensive but enforced so small amounts of money by the hundreds who use areas would help offset maintenance and improvement
- 239. Nothing. I use parks in Austin and other places. I don't expect outsiders to shoulder the burden.
- 240. Add tax similar to NHCEmergency.
- 241. Like the library with a small sales tax assessment.
- 242. I live in the city limits and I pay city taxes, so it is not fair that only us as a city residents paid for everybody else. I think they should pay taxes!
- 243. Not sure.
- 244. Fund raising events at the parks or rent the facilities out for birthday parties, weddings, team or family gatherings.
- 245. Membership fees for non residents? I know Westlake does that for their library. I'm not sure how Lake Travis does their parks, because others use their facilities, too.
- 246. Fund raisers.
- 247. I am not sure.
- 248. \$100 more per year in Property Taxes
- 249. Is there any way to collaborate with the county for park areas? Taxes levied by county???
- 250. Instead of City, make it a county park. Opening the parks to sports associations, charging an annual fee, etc.
- 251. Fund raisers, annexing more land into city of Dripping Springs, use sales tax revenue to more fairly spread cost over those who "live" in DS without being in city limits.
- 252. Awareness of need through mail outs, social media, fund raising.
- 253. Increase fees for DSYS sports that use the public facilities. But I would only support that if the city does indeed improve the facilities used by DSYS.
- 254. Annex surrounding land to increase the city's population.
- 255. Fees.
- 256. There are a lot of organizations that could assist with fund raising. Girl Scouts, Boy Scouts, Church Organizations. Schools.. Advertise at the schools, send home flyers with the students, have functions at the parks.
- 257. Require these Big Box Business who pay crap wages to spend a little to make the parks Better. The 2000 residents are taxed enough.
- 258. To start, make sure there is no bond election for funds that would also be shouldered by the 2,000 residents within the city limits.
- 259. Reduce or close parks to eliminate expense.
- 260. Taxes on large area businesses like Home Depot, HEB, McDonalds. Also we would support fund raisers at events.
- 261. Get rid of the entire city council and that mayor.
- 262. A modest per vehicle entry fee - park users pay.
- 263. Taxes.
- 264. Usage fees.
- 265. Admittance fee for events at the parks, excluding the sports park as the team fees include park fees.
- 266. Pay a small admission's fee when used.

- 267. We already pay extremely high property taxes 3.14 %that went up again so where is the money going?
- 268. Good question...dunno.
- 269. Yearly park memberships, discounted for residents- but parks must be awesome and multiuse.
- 270. Public awareness, donation boxes & more public use. Baseball field would be nice. We use the one in Belterra for practice.
- 271. Hold volunteer clean up days or fund raising days.
- 272. Usage fee.
- 273. Fund raising during large events, sales taxes.
- 274. Pay to play. Rental of facilities. Additional small fee associated with sports use.
- 275. Not sure.
- 276. Park fees.
- 277. Question designed to obtain desired response.
- 278. Not for sure.
- 279. Not sure how income from sales tax is budgeted out? The outer areas probably wouldn't mind supporting if had a voice on the city council but that may involve annexation. Is there a way around that?
- 280. Sales tax collections from those that visit the parks that live outside city limits is the best way of funding the City parks. Although not all users of the parks live in the city limits they still provide a benefit to our local economy by adding to the tax base. The parks attract people to DS, those people then spend dollars in DS adding to the benefit of the local economy.
- 281. Tax ETJ
- 282. Fund Raisers, small entrance fee.
- 283. Annex the areas.
- 284. They can pay the same tax as city, or a fee to enter.
- 285. Entrance fee for non-residents for parks like Founders (where pool is a big draw for non-residents - non-residents should pay more to enter). The Dripping Springs Ranch park should charge non-residents of Dripping Springs higher fees for horse back riders, etc.
- 286. Donations.
- 287. Incorporate the ETJ area to increase City tax revenue.
- 288. Talking with county commissioners and swaying county support and funds.
- 289. For DSYSA sports tied to the parks you do get non city limit support and those fees are already high.
- 290. Pay a fee.
- 291. Entrance / parking fees.
- 292. Not sure.
- 293. Fund raising.
- 294. Same method as for library funding (waste collection).
- 295. Seems like most of the maintenance is already funded by nonresidents via DSYSA
- 296. Expand city limits to include ETJ, allow residents in the ETJ to contribute/pay taxes to support the parks & rec.
- 297. Not familiar enough with how to do it. To initially fund would probably need fund raisers and asking different MUDs and WCIDs financial support. To maintain a recreation center would need to charge fees one for those in DS area and one outside of it.

298. Residents who live within the DSISD should have a way to contribute to the park development, since most likely they would benefit directly from such development.
299. Donations.
300. Sales Tax revenue, property tax increase.
301. Make the parks rec fields more accessible to them. There are enough parks, will need more rec fields to meet the new development.
302. Donation boxes at trails.
303. Continue as present...Pay to play programs.
304. Admission fee into some parks.
305. Tax?
306. Usage fees. Entrance fees (if possible). Donation boxes.
307. Bond election.
308. Fee base. People that use it should pay for it.
309. Unsure, but I am one of the 2,000.
310. Entry fees.
311. Sales tax.
312. Not sure what the answer is there.
313. Bonds or special assessment.
314. Sales tax. I don't live in the city limits, but most of my grocery shopping is done at the DS HEB.
315. Volunteering, tax deductible contributions, a parks foundation like the trail foundation in Austin; the Trust for Public Land (a non profit that specializes in creating public park space and preserving land).
316. ETJ pay taxes like the 2000 in town residence. Or a higher use fee for out of city limit residence.
317. Entrance fees, membership fees, funding by use - not tax
318. Sales tax from local business who see an increase in business as a result of visitors to the park.
319. Taxes.
320. Strike oil.
321. Why is this the case? I'm not sure I understand.
322. Tax revenue we pay that goes to the city.
323. ?
324. Supporting a bond election, as well as being made aware of opportunities that exists to volunteer time to the upkeep of this park.
325. Give us a vote on other issues and we will be willing to help out here. ETJ has NO say in anything...Leaves a bad taste in our mouths.
326. Not to spend all of your money in one park.
327. Not sure.
328. They should not contribute to a city they are not able to vote in. Park areas should be solely supported by its tax paying and VOTING citizens.
329. Regional fund raising.
330. Annual fee for usage.
331. Fees.
332. The city park system leases parks/fields to DSYS and other civic organization which leads me to think that non-city limit residents are shouldering their use of the facilities.

- 333. Property taxes.
- 334. DSISD tax.
- 335. Pay an entry fee to use facilities.
- 336. Property tax, perhaps part of the school tax?
- 337. Fee based parks, extend bonds to zip code 78620 residents, more fund raising opportunities, event based events at parks to raise awareness and funds.
- 338. Fund raisers.
- 339. The city should annex neighborhoods and businesses within its ETJ
- 340. Sales tax revenue.
- 341. I live in the ETJ and I would support a fund raiser that supported all of the parks- or perhaps the park dept. could sponsor an activity at Founders Day that would let people know how to support the parks.
- 342. Don't spend money for development outside the city limits. If the residents of an area outside city limits want park space they should have to pay taxes for the city to build the parks.
- 343. Not sure. Not familiar with options.
- 344. Registration fees from sports activities.
- 345. Partner with Hays County to develop parks.
- 346. Fund raising, special events.
- 347. Non resident fees based on usage. NOT a property tax increase.
- 348. Fund raisers.
- 349. Fund raising.
- 350. Entry fee for non residents. Residents must show a Dripping drivers license.
- 351. Fund raiser.
- 352. Include it in taxes.
- 353. Need more grants.
- 354. Perhaps a large, focused volunteer-driven effort to fund raise for specific improvements, such as a playground (Coppell's Kid Kountry fundraising effort is an example of this).
- 355. Donation boxes, user fees and a partnership with the County.
- 356. Pay as they use them, or yearly "contribution" with tag on vehicle to allow usage.
- 357. Parks fund raiser or booth at some of the local sporting events that are held at the various parks.
- 358. Fund Drives and Donations. Charging for certain park activities.
- 359. Fund raisers at the park.
- 360. Have fund raising events.
- 361. Give them some voice in who gets elected to the City Council and thus controls the decisions that effect them.
- 362. Special event fees, free to those in city limits.
- 363. Excuse me, but, most decisions that influence those 25,000 people are made only by the 2000. Most of us living right outside the City Limits but whose children go to DS do not have a right to vote on issues.
- 364. ETJ should pay tax for this as well.
- 365. Capital campaigns.
- 366. Fund raising events.
- 367. Maybe fund raising events like 5K. Best solution is to extend the city limits so more residents have a vote and truly represent Dripping Springs.

- 368. You cannot possibly afford to staff a park to charge an entrance fee. Perhaps charge companies to advertise and use the proceeds to off set the expenses.
- 369. Volunteer drives.
- 370. Community events/fund raisers hosted at parks.
- 371. Donations, entrance fee.
- 372. Give free passes to city limits folks, put up honor boxes for non-city limits folks. Sell park passes to frequent users so they have a sticker and won't need the honor box.
- 373. A bond issued for all of North Hays County or at least the DSISD area. All the residents of this geographic area benefit from the parks and should be contributing to their maintenance and development.
- 374. Annual fee to use it.
- 375. Supporting our local businesses so our sales tax revenue can handle our city service needs.
- 376. That is your job. Need a good spokesperson and it can easily get done.
- 377. Annex more of the ETJ! All you have to do is ask, hold a few public hearings and done. :) Easy as that, right??? HA HA....But seriously, annex SOME established neighborhoods, like Heritage Oaks, Sunset Canyon, Bear Creek, etc...
- 378. More horse shows and a better horse show venue.
- 379. A Friends of the Park Booster club would be a good idea that could then support the parks through fund raisers.
- 380. Extend the City limits.
- 381. Donations.
- 382. Annexation or user fee on property taxes.
- 383. Don't know.
- 384. Open to hear ideas but I do not have one.
- 385. Continue solicitation for county funds from previous bond election(s) if available; continue seeking grant opportunities (TPWD, etc.).
- 386. Not sure but would be willing to hear ideas.
- 387. Pay a fee.
- 388. FEES FOR USING THE FACILITIES.

ADDITIONAL COMMENTS RECEIVED FROM THE NEEDS SURVEY

QUESTION 9:

What is the single most important issue or need concerning City of Dripping Springs parks or recreation programs? (Write in any comments.)

1. Needs a small town, reasonably priced golf course.
2. Sports complex---baseball.
3. Funding.
4. PR/Marketing of the parks and programs.
5. I would like to have a couple of public tennis courts in a park. I grew up in Illinois and was a nationally ranked tennis player. Almost every small town in Illinois had a public park with a couple of tennis courts. I retired and moved here in 2004 and love living here. My wife and I like to go out and play tennis several times a week. The High School has an excellent facility that is great to use in the summer when school is out. However during the school year weekends are really the only time the courts are available. We would really like a place to play during the week. People suggested when we moved down here that we should join a country/private club, and my response was although I was a nationally ranked player, I always was a public parks kid ! And that's still the way I feel. Any consideration you could give for adding a couple of simple tennis courts to your upcoming plans, would be wonderful. David Moss.
6. Could use more tennis courts.
7. Maintaining facilities.
8. Off leash area for dogs so pet owners don't have to drive so far to go to a dog park.
9. Overall quality if parks.
10. Maintaining and updating/improving existing parks.
11. Disc golf coarse at public parks.
12. Tennis courts, children's activities.
13. Need more robust playscapes for all ages of kids.
14. Curfew is at 10:00. And there are few, if any, places for teens to safely gather. This means teens looking for sports/parks/recreational facilities must go into Austin or Bee Cave.
15. Lighting.
16. Updated facilities. Lights, Sports field surface improvements.
17. We need more public education about natural resources and land management as well as information on endangered, threatened and invasive species (both flora and fauna).
18. Cost of swim team is astronomical and should be something all families can afford. City of Austin charges \$70 per person for swim team so that is where we go.
19. I don't feel safe using the parks even in city because there are isolated areas and usually not many people.
20. More maintenance to keep parks clean.
21. Growth and increased demand!
22. We need continued access for youth sports.

23. A place for our upcoming youth to hang out and be safe!
24. Ease of accessibility to older citizens and small children.
25. The park commission is staffed by persons that do not have the appropriate credentials or education for guiding the Parks & Rec dept for the City. A minimum should be a BS degree in a natural science discipline.
26. Maintaining habitat while providing access to parks.
27. Develop a concrete long range plan.
28. Sports dominates every aspect and I want to see space left open for groundwater recharge, ecological restoration (including plants and wildlife) and casual recreation opportunities.
29. Updating of facilities.
30. Upgraded pool and part surroundings.
31. Not enough to do for teenagers, like skate park.
32. Funding for staff.
33. Maintenance of fields, roads, parking lots and equipment.
34. Growth vs funding and land availability.
35. Need swim center.
36. We do not have much of a TRUE park....something like Zilker.
37. Maintenance.
38. Better publicity and hiking and biking trails.
39. Not enough parks that can be used for going for walking or hiking.
40. City needs to have a parks and recreation department that is in charge of all programs that use city parks. We are no longer a small community and total voluntary programs need to be curtailed so there is a consistency of control over the activities.
41. Better publicity.
42. Exposure.
43. Money.
44. Well, since I have horses, would like to see more horse trails.
45. Update and expand current locations - find a more effect way in letting the public know about each park.
46. Staffing.
47. Funding.
48. Frisbee golf course is needed.
49. Need better information/advertising on parks & facilities, ie an article in local paper (DS Century -News, etc) on features, updates, etc.
50. I get most of my local information from "The Hill Country Sun" because it covers MORE than our area. Need more coverage/info on regular basis.
51. Funding.
52. I live in Wimberley, and am not real sure.
53. Bike lanes.
54. Charro Ranch needs at least minimal funding and a commission dedicated to its care as other parks have.
55. More parking space needed for the existing Dripping Springs Ranch park to make the whole development worth while.
56. More open space.
57. Generating more public awareness of our parks.
58. Wildlife and outdoor activities.

59. Listen to knowledgeable experts about land management.
60. The situation described in Question 8.
61. Theft issues.
62. Need more multi-use facilities (playgrounds for various age groups, dog park, trails, sports fields, pavilions, etc). Bee Cave Central Park is a fairly good example of a park done well and utilized by all ages.
63. ?
64. Parking, bathrooms, updated equipment.
65. Better management.
66. Additional sports field for a variety of sports & parking.
67. That it not be based on school related sports as first priority, the parks /recreational areas are for ALL ages.
68. Developing a connected, integrated parks and open space system, linking Downtown/Old Mercer St with existing and future (or expanded) parks and open spaces.
69. Keep parks wild. No need to recreate other cities because most people live on acreage, or have amenities like belterra.
70. Maintenance.
71. More walking/biking trails.
72. I would love to see a skate park and more bike trails, not just areas or equip;meant for children up to 8 years old. My kids still like to play, but the parks are catered to little kids.
73. Sorry, since I don't use them, I can't say.
74. So glad that a horse facility is coming in. Will bring lots of fun and opportunity to locals as well as surrounding area. F-burg/Johnson City/Blanco/Llano/Austin/Bastrop - just to name a few ...
75. The City has some great and large park lands. Money needs to be spent on improvements in the existing parks before funds are spent on new park lands. Improvements will generate more use and more community support for future improvements.
76. How to update and maintain all parks to a high standard.
77. Facilities: maintenance.
78. Please don't allow Dsisd Community Ed to control park areas and activities.
79. We need a huge indoor gym.
80. Concerns me that when I am at Sports Field, I see the buildings that the school is renting with doors open wide, A/C going strong and no one inside. Coaches and students should NOT have A/C if they can't be good stewards of bringing down the costs. They are not paying enough if they can afford to leave doors open and windows open.
81. Traffic and construction create overly aggressive drivers.
82. Update facilities.
83. The development of existing park space to functional park space for everyone.
84. Having adequate staff.
85. Too much control for usage by specific organizations. Example ...only DSYSA uses the sports plex, DSISD charges fees offering classes on community land .
86. We need a swimming pool.
87. Parks benefit only a few people and not the masses.
88. Parks cost a lot of money and bring in little...most important issue is to get more \$ to fund upkeep.

89. Maintenance...get the county involved financially.
90. Maintenance & upkeep.
91. I would like more children's (ages 11+) classes, as opposed to sports programs. Things like art and science classes would be great. Home school classes through parks and recreation would be very advantageous for the city too.
92. Linear trail development along creeks and streams.
93. Good facilities.
94. We need hike and bike trails inter connecting various parts of the surrounding area, not just the city, with destination parks in a big circle around the area
95. Dog park.
96. Need more publicity.
97. We need more multipurpose fields like founders and more jogging/bike trails.
98. Place for kids to practice youth sports.
99. Having all areas of DS represented with parkland.
100. How to pay for our parks.
101. For virtually nothing the city needs to fix that eyesore that is the parking lot at Veteran's Memorial Park. It is shameful that it's in such hideous condition. It's the main intersection "welcoming" folks to Dripping. Simply topping that parking lot with a couple inches of decomposed granite gravel, using a PEC poles for parking bumpers, a tasteful and rustically chic cedar post fence a la Nutty Brown's to lashed to that chain link fence to hide that bull dozer and the back of the water tank. And keeping any grass between parking bumper and 290 weed eaten or mown. It's embarrassing how awful that corner is and how it could be tidied up with the help of volunteers and a bit of pink granite gravel. Black asphalt is NOT the answer.
102. Sports fields, bike paths.
103. Growth.
104. No way to get a decent workout - by foot, by bike, on horseback.
105. Need updates.
106. Dog park with hiking trail and water access.
107. Old facilities (pool especially).
108. Walking trails in nature.
109. Don't overdevelop them.
110. Affordable sporting and outdoor opportunities - trails, playscapes, etc.
111. Natural areas, hiking, bike trails. Not sports fields.
112. Organized activities.
113. Up to date facilities brings in the old and new residence and visitors.
114. Facilities.
115. Expand to serve growing population and also be a destination for residents that will improve everyone's property values.
116. Publicity.
117. Recreational use must be balanced with sustaining plants, wildlife and water resources.
118. Keep all maintenance and improvements, sustainable, responsible and within our means on a low budget
119. I use a wheelchair. Need more handicap parking and sidewalks to access facilities. Make sure there are wheelchair accessible rest rooms. Baseball and soccer fields need sidewalks when ground is wet. My grandsons played baseball recently at the sports complex. I'm not sure

- if this is a city or YMCA sponsored activity. My daughter-in-law told me it was rather expensive to play. (Why not little league?) Maps of the field numbers are needed for grand parents to find location of games. The gravel roads around the baseball fields are HORRIBLE. They are rocky and bumpy. Driving on the gravel roads produced a lot of dust for people to inhale.
120. Natural space.
 121. Continued development.
 122. Need for media - advertising, I was not aware of the Dripping Springs Ranch park (unless it is the Harrison Park).
 123. Personnel to manage the "park business" and daily up keep of existing facilities.
 124. Maintenance of what you have and expansion for population growth.
 125. Larger picnic facilities.
 126. We need to utilize them for events. During Founders Day for example let's have a concert series so we can collect parking fees and gate money. Also baseball fields next to the High School have old poles in the parking lot sitting on the ground with metal rods sticking out. This past week I watch a child trip over the rod and fall. These metal are a lawsuit waiting to happen.
 127. Need a really big park, or parkland integrated with private lands, with long (several miles) trails and swimmable water features.
 128. Need for playscapes.
 129. Upgrade bath facilities at Founders Park.
 130. DS has great asset in its parks but even I that have lived here 20 yrs rely on word of mouth to find out walking areas and areas good for walking dogs or with friends for exercise. DS Babbly does a little. Don't get the paper anymore. If advertised then used and supported by public more readily. We have lots for such a small town and proud of that. any chance of getting a little land along Creek road and making bicycle paths for kids and for adults? Does not have to be more than 2 miles but DS have a bike reputation already to build upon.
 131. One park does not have everything. Like Founders could use a bigger play place for the older kids. The park behind HEB there are no swings. I seems like if you have a little kid you go to one place and a bigger kid to another place. There is not one place to take all the kids to play.
 132. Usage.
 133. Good management.
 134. Upgrading conditions of extant parks excepting sports park; purchasing new acreage beyond city limits with access to utility/water services; hiring locally for future projects
 135. No tennis facilities and general state of facilities is poor.
 136. Would like to see more running trails.
 137. I would like to see activities for seniors, with publicity about them in the community newspapers and on Facebook.
 138. ?
 139. Mowing.
 140. We have young children but will travel to parks in Austin. The playground equipment here is old and limited. It seems like the current park space could be updated to be a lot more useful.
 141. Need more parks.
 142. Not that familiar with parks.

143. Safety.
144. Good clean functional bathrooms, dog parks, good walking trails.
145. Growth of recreation programs. Currently sign-up information for recreation programs only seems to find those who are already in the data base. This information needs to go beyond a database and reach a greater audience. This would increase revenue for the programs and parks. Regarding kids, I don't understand how come all children are not offered flyers . announcing sign-ups for each of the sports offered at their various schools.
146. Access to good trails, safe facilities.
147. Needs to offer programs for our youth & updating the current parks .
148. Conservation of open space in and around Dripping Springs for recreation.
149. Working with sports organizations. This is who uses the parks.
150. The historical park areas i.e, Pound House, are not supported by the city.
151. Love the sports programs. I would love to see a BMX course and a skate park for the kids.
152. Would love a trail system.
153. Facilities for children's activities.
154. Need to preserve land to protect the Dripping Springs culture from the rapid, ongoing development. Jogging and biking paths in scenic areas are my favorite recreation.
155. Too many subdivisions and ugly development.
156. Beautify with local nature, wildflowers, rocks, properly arranged.
157. Very single use - one for horses, one for a pool, one for sports. Need more areas with trails/ picnic facilities so folks can enjoy. Horse venues have come and gone many times in Dripping - our time for supporting ag activities is about past. need to move up to be more suburban - more pool activities, bands/events, concessions, hiking areas. Of those available, only the sports park is maintained to a point where it is enjoyable to spend some time there.
158. Don't know.
159. Physical improvement i.e. parking and facilities.
160. Maintaining existing parks adequately.
161. Since I don't use them much I would say increasing awareness to their usage and availability.
162. Splash pads, picnic areas, walking / biking trails, fishing access.
163. Trash cans fall down with winds and trash goes everywhere.
164. Funding.
165. Open space, parks not dominated by single user groups.
166. Green space - there are no parks of significant size to buffer all the new development
167. Safe hiking trails.
168. Need more attention to the Arts.
169. The city could bring in more revenue through the development of a sports park. This would benefit restaurants, gas stations, food stores, and hotel by bringing in people to participate in these sporting events.
170. Maintenance of trees in parks areas, update playground equipment, make a REAL city pool that people want to use!!!
171. Updating physical structures.
172. Improvements/maintenance of existing parks
173. Support for DSYSA.
174. Need a better/bigger pool. Two large parks seem to be very restrictive in their use. Need better advertising concerning programs at parks.
175. Parking.

176. Lack of a big picture plan for parks and recreation.
177. None.
178. We need a CITY POOL that is decent. Founders Park is very nice, but the pool is in awful condition. too many people use it for swim team purposes and we need to provide a WAY better facility for our children and community.
179. Keeping them clean, lots of trash. Better available bathroom, not port-a-potty.
180. Too much development.
181. We need to do something like Haines, AK's playground - most amazing I've EVER seen - and they are a tiny community that's under snow most of they year - check out this playscape - it would be a destination for Central Texans! click on "photos from the celebration" - there are blueprints available <http://hainesak.com/playground>.
182. Better maintenance of grounds and upkeep of playgrounds for kids.
183. Outdoor, pet-friendly.
184. Large running walking trails, bathroom facilities, public pools and picnic areas.
185. Growth.
186. Management.
187. More hiking trails.
188. Interesting programs
189. Need for pool improvements - splash pads water area.
190. Need more. Do a campaign to have more ranch land donated.
191. Regular maintenance.
192. Updating Founders Park , parking lot and adding facilities to accommodate other sports. Bathrooms would be nice.
193. Keeping them safe & clean.
194. DISC GOLF COURSE IS NEEDED./ WATER FEATURES ALSO NEEDED
195. Maintenance, water, funding.
196. Conservation of property, heading off destructive development on special lands.
197. Making sure the facilities/parks are kept up to top condition.
198. Clean rest rooms and drinking fountains.
199. Good trails for running / strollers.
200. Fix up Founders Park playground/picnic area.
201. Traffic to and from the parks, connect them with trails.
202. Providing things of interest to adults.
203. Qualified, experienced employees, and directors.
204. I would say making sure waterways are available to all.
205. To beautify our city/community.
206. Nicer bathrooms... more bathrooms at founders.. we are there all the time for lacrosse.
207. More activities for adults.
208. Support for our youth ie, baseball complex.
209. I have no idea. We just do not use the parks very often.
210. Trash and rest room facilities.
211. No great gym, the YMCA is one of the worst I've ever seen. Indoor pool
212. Bathrooms, available to youth sports.
213. Bathrooms available year 'round at Founders.
214. Keeping them natural...no lighting that will mask the night sky.
215. Probably maintenance.

- 216. More playgrounds.
- 217. Improvement and safety.
- 218. Maintain the parks we have. Make new neighborhoods provide ample parks and green space.
- 219. Need buildings for indoor usage.
- 220. Expanded and or updated playscapes at both founders and sports parks
- 221. Variety of activities.
- 222. More trash cans, recycling, and dog bag stands. Lots of dogs use the park. Mountain bike trails, dirt bike trails, dog park.
- 223. Maintenance so they can and are used more - hike and bike trails, better pool facilities, community events and fund raisers for the parks.
- 224. Better pool and rest room facilities.
- 225. Bike trails or lanes on the roads.
- 226. We need a dog park!
- 227. More swimming pools. The City pool gets extremely crowded during the summer. It is not enjoyable when there are so many people in a small space.
- 228. Need more Marketing to drive traffic to these parks.
- 229. Access to water.
- 230. Public tennis courts.
- 231. More rest rooms, more things for kids - better pool, better playground equipment, etc.
- 232. Needs playscape and special needs play equipment/scape.
- 233. More land.
- 234. Improved football and lacrosse fields (care & maintenance).
- 235. Recreational programs for kids.
- 236. Better playscapes, rest room facilities that are actually open during the day
- 237. See #8 ;-).
- 238. Ongoing Maintenance and upkeep.
- 239. Veterans Memorial Park is the first thing people see when driving into Dripping Springs and it gets the least amount of attention. It should be a tiny shining jewel - if it "all starts here" then that should be our best representation. That parking lot is an embarrassment.
- 240. Cost, it needs to be reduced to a minimum.
- 241. More events are desired where the community can gather, socialize, and meet one another. Encouragement of area clubs would also allow for more use of the parks and allow more people to see them and what DS has to offer.
- 242. Connecting the parks.
- 243. More playground equipment in Founders Park since this is a young community it is very much needed...think how old these are.
- 244. Why does the city spend so much money on Ranch Park and not a penny on the others. How much does all those improvements to ranch park cost to service a small few, where as all the sports parks are used daily by our kids.
- 245. Adequate parking and security
- 246. Improving current parks.
- 247. Having more events throughout the year.
- 248. Safety shade.
- 249. Maintain green space to balance massive residential development plans.
- 250. Growth.

251. Public awareness.
252. Football fields at Founders Park are really hard and full of fire ants.
253. Lack of Public use Sporting venues for kids - ex. (SE Metro Park, East Metro Park, NE Metro Park...etc.)
254. They need bathrooms, not port-a-potties.
255. Maintenance.
256. Better youth sports facilities
257. Security.
258. Exposure.
259. Preservation of natural habitat.
260. Not know about the parks.
261. Accessible bathrooms and a down town out door gathering spot, a Square.
262. I'd like to see the existing parks be better developed (e.g. expanded public pool with water features, Founders Park walking trail extended to Mercer, etc.)
263. Not to overburden DSYSA participants with exorbitant usage fees.
264. Maintenance.
265. Fun safe place for kids and events.
266. Lack of accessibility due to lack of public trails/walkways to connect community to parks. We live less than 1 mile from Founders Park but cannot get there without getting in a car. It's an overall issue for DS that we do not have accessibility for non-drivers. Having to put my bike on the car to drive it to Dripping Springs Ranch park to go mountain biking seems ridiculous when I could ride there if the town could provide bike lanes.
267. Quit dumping all of the park money into Harrison Park/Ranch Park or whatever that was of money is called across street from elementary school.
268. More field space, improved facilities (rest room) at Founders.
269. Insure that the ranch park is a success. It will draw in the tax dollars. Just look at Gonzalez Texas with their similar facility. It also provides the community with the much needed Ag recreation facility which is very strong in the community.
270. Cost effective improvement of quality of life and nature preservation.
271. Not enough art.
272. Dog Park
273. playground toys are horrible...our parks look like poor man parks.
274. More accommodations for special needs community.
275. Multi-use sports complex in the Sawyer ranch area.
276. There is no dog park.
277. More modern parks.
278. At least one park should have playground equipment geared towards older children. Most equipment is extremely basic and leaves behind a lot of children who are over the age of five. More challenging courses would be great. Bathrooms need to be upgraded at Founders park to make it cleaner and more user friendly.
279. I don't see an issue right now.
280. Convenience to neighborhood.
281. Advertising.
282. Finances/upkeep of structures.
283. Improve swimming pool facility.
284. Updated facilities.

285. Trails for running, walking or biking longer than 1 mile.
286. New equipment. What is currently there is in need of repair or it just isn't current. My child thinks the parks here are pretty boring.
287. There must be some way to make the parks less frightening and forbidding. Families and persons alone should not be afraid to use the few sad, dusty parks around dripping springs but I am. I drive to Austin to ride my bike, swim and run instead. It's a shame.
288. Parking enforcement.
289. Sports parks are among worst in central texas area.
290. Parking and need of paved roads at baseball parks.
291. Easily accessible open space for hiking, running mountain biking and other outdoor activities. The sportsplex is great for team sports but we need to offer our residents access to the beautiful hill country for these other activities.
292. Permanent Public Rest rooms at Founders Park.
293. Organization.
294. Maintenance and needs more attractions at the parks to draw visitors.
295. Field conditions improved , someone who maintains irrigation system during season, application of winter rye grass seed on soccer fields.
296. No skate parks for kids.
297. Recreational activities and classes could drive revenue and desirability on town
298. Play areas. Existing playscapes are geared toward toddler age kids. What about the older kids that want to play? The existing playscapes are too small for them.
299. Cleanliness.
300. Family friendly. Lake Water access.
301. Safety of trails and secluded areas.
302. I think we need to improve existing parks so people use them more. Some of the parks are over grown, no walking paths and areas to kick a ball.
303. Tax Base by commercial businesses.
304. We need more sports related parks. This is a family place not a rodeo place.
305. Updating the facilities as well as bringing more recreational options. Example the pool in Lakeway has water slides and tables for picnics.
306. Parking, facilities.
307. Let people use them.
308. Better playgrounds.
309. Condition of facilities.
310. Improve facilities already owned. Stop improving a park that is only serving a small subset.
311. Keeping parks safe ad useful- bathroom access.
312. Upkeep.
313. Community involvement that consist of an Advisory Board.
314. Need more soccer fields.
315. Running/bike trails.
316. Water and cost;land price increase; need to earmark/purchase land asap.
317. Information.
318. Would like to see some biking or running trails.
319. Upkeep.
320. Water - money - support.
321. Funding.

- 322. Funding.
- 323. Water park.
- 324. Renovation of Founders Pool.
- 325. A clean, safe place for families, students, etc to enjoy.
- 326. Not enough facilities for Children. We need more or better playing fields, sports fields, play ground equipment.
- 327. A place to play sports.
- 328. More hike and bike trails so kids can safely ride bikes and adults can run
- 329. Unsure.
- 330. Family access.
- 331. Kids play ground like Zilker.
- 332. We need a splash pad for kids and to fix up the play facilities at Founders which are appalling.
- 333. More basketball courts...bathrooms that are open...a splash park.
- 334. A large playground for children ages 3 - 12, similar to Kid Kountry in Coppell.
- 335. Too much concentration on children.
- 336. Equestrian, so thank you for the ranch park and the arenas!
- 337. Bathrooms that are open during park hours... port-a-potties are not very clean
- 338. Need hiking trail system.
- 339. Variety of activities.
- 340. More running trails.
- 341. We need a mountain bike trail system in dripping springs ranch park.
- 342. Focus on the desires of the majority, not the desires of the few who control the City's pocket book. They may want a goat-roping and riding area, but the majority don't care.
- 343. Trails and sidewalks to get to them. specifically from the high school.
- 344. Safety, maintenance.
- 345. Parks and Recreation are luxury items, basics need to be address first.
- 346. Ease of use.
- 347. Communications.
- 348. Not familiar with the parks anymore.
- 349. Not every rides horses, more natural parks like Charro Ranch.
- 350. Preserving open space.
- 351. Walking trails.
- 352. Undeveloped land. Hiking, biking trails
- 353. Rest room facilities.
- 354. Water park or squirters.
- 355. Improving/repairing founders park.
- 356. Founder Pool is a good facility but is in need of improvement. Specifically they need more shade structures, more decking to provide better (non-muddy) seating area, better fence to prevent vandalism.
- 357. Safety and access.
- 358. To provide outdoor activity.
- 359. Build the loop around Drip. Staffing for better maintenance.
- 360. Have more POOLS, incorporate more sports, i.e. mountain bike riding, skate park, jogging trails,...never can have enough trail systems, with benches along the way, and history markers and add educational bits and pieces about Dripping at each marker. In area

seven or area 3 add a Public amphitheater for performances and parties...Charge rent like how Cedar Park charges for their pavilions etc...don't let us LOOK like Cedar Park, but view how you can rent out parks online. Make the Veterans park, look like a farmers market! I love the idea, but it looks like....\$*^@ ;-P

- 361. Horse show venue.
- 362. Maintenance and upkeep.
- 363. Having somewhere safe and family oriented.
- 364. The parks need funding to support maintenance and programming.
- 365. Multi-purpose capacity.
- 366. Provide opportunities for the residents to get out.
- 367. Green space, preserving the "country" feel of the area, preserving groundwater water with open space.
- 368. A parks and rec full time employee.
- 369. Diversity of activities.
- 370. ?
- 371. Needs a small town, reasonably priced golf course.
- 372. Sports complex---baseball.
- 373. Funding.
- 374. PR/Marketing of the parks and programs.
- 375. I would like to have a couple of public tennis courts in a park. I grew up in Illinois and was a nationally ranked tennis player. Almost every small town in Illinois had a public park with a couple of tennis courts. I retired and moved here in 2004 and love living here. My wife and I like to go out and play tennis several times a week. The High School has an excellent facility that is great to use in the summer when school is out. However during the school year weekends are really the only time the courts are available. We would really like a place to play during the week. People suggested when we moved down here that we should join a country/private club, and my response was although I was a nationally ranked player, I always was a public parks kid ! And that's still the way I feel. Any consideration you could give for adding a couple of simple tennis courts to your upcoming plans, would be wonderful. David Moss.
- 376. Could use more tennis courts.
- 377. Maintaining facilities.
- 378. Off leash area for dogs so pet owners don't have to drive so far to go to a dog park.
- 379. Overall quality if parks.
- 380. Maintaining and updating/improving existing parks.
- 381. Disc golf coarse at public parks.
- 382. Tennis courts, children's activities.
- 383. Need more robust playscapes for all ages of kids.
- 384. Curfew is at 10:00. And there are few, if any, places for teens to safely gather. This means teens looking for sports/parks/recreational facilities must go into Austin or Bee Cave.
- 385. Lighting.
- 386. Updated facilities. Lights, Sports field surface improvements.
- 387. We need more public education about natural resources and land management as well as information on endangered, threatened and invasive species (both flora and fauna).
- 388. Cost of swim team is astronomical and should be something all families can afford. City of Austin charges \$70 per person for swim team so that is where we go.

ADDITIONAL INFORMATION RECEIVED FROM THE NEEDS SURVEY

QUESTION 11:

The following tables indicate park facility scoring priorities for each of the living areas as designated on Question 19.

Area A

Categories	1st	2nd	3rd	Total Score
Trails	31	17	12	139
Senior Center	16	7	5	67
Playscapes / Playgrounds	17	3	4	61
Natural Areas and Open Space	10	13	9	65
Outdoor Pools	6	11	9	49
Dog Parks	13	6	5	56
Multi-Purpose Indoor Center	4	8	7	35
Picnic Areas	2	3	10	22
Indoor Pools	5	8	4	35
Tennis Courts	6	4	2	28
Water Playscapes		1		2
Football Fields	1	0	0	3
Fishing Access Areas	2	3	2	14
Pavilions/Shelters	1	6	1	16
Soccer Fields	3	2	3	16
Baseball Fields	2	2	1	11
Community Gardens	1	3	5	14
Basketball Courts	0	4	0	8
Disc Golf	1	1	3	8
Botanical Gardens	0	4	1	9
Softball Fields	1	3	1	10
Skate Parks		2	1	5
BMX Track	3	1	0	11
Volleyball Courts				0

Area B

Categories	1st	2nd	3rd	Total Score
Trails	14	7	3	59
Playscapes / Playgrounds	9	1	3	32
Senior Center	5	4	2	25
Natural Areas & Open Space	1	7	8	25
Dog Parks	4	3	0	18
Multi-Purpose Indoor Center	3	3	3	18
Outdoor Pools	2	0	6	12
Tennis Courts	1	4	1	12
Picnic Areas	2	1	3	11
Baseball Fields	1	3	1	10
Fishing Access Areas	1	1	2	7
Basketball Courts	2	0	1	7
Community Gardens	0	2	2	6
Indoor Pools	1	0	1	4
Soccer Fields	1	0	1	4
Disc Golf	0	2	0	4
Water Playscapes	0	1	1	3
Botanical Gardens	0	1	1	3
Pavilions/Shelters	0	1	0	2
BMX Track	0	1	0	2
Football Fields	0	0	0	0
Softball Fields	0	0	0	0
Skate Parks	0	0	0	0
Volleyball Courts	0	0	0	0

Area C

Categories	1st	2nd	3rd	Total Score
Trails	21	13	3	92
Natural Areas and Open Space	6	5	4	32
Playscapes / Playgrounds	7	2	5	30
Senior Center	6	3	2	26
Outdoor Pools	3	5	4	23
Multi-Purpose Indoor Center	2	5	5	21
Baseball Fields	1	3	2	11
Picnic Areas	1	1	5	10
Pavilions/Shelters	1	2	1	8
Disc Golf	0	3	1	7
Dog Parks	0	3	1	7
Soccer Fields	1	2	0	7
Indoor Pools	2	0	0	6
Water Playscapes	1	1	1	6
Basketball Courts	1	0	2	5
Skate Parks	1	1	0	5
Tennis Courts	1	0	2	5
Community Gardens	1	0	1	4
Softball Fields	1	0	1	4
Botanical Gardens	0	1	1	3
Fishing Access Areas	0	0	3	3
Volleyball Courts	0	0	1	1
BMX Track	0	0	0	0
Football Fields	0	0	0	0

Area D

Categories	1st	2nd	3rd	Total Score
Trails	8	8	4	44
Playscapes / Playgrounds	6		4	22
Senior Center	5	1	5	22
Dog Parks	6	1	1	21
Indoor Pools	5		3	18
Natural Areas and Open Space	3	4	1	18
Outdoor Pools	1	7	1	18
Picnic Areas	2	4	4	18
Multi-Purpose Indoor Center	2	4	3	17
Soccer Fields	4		1	13
Fishing Access Areas		2	3	7
Pavilions/Shelters		3	1	7
Softball Fields	2		1	7
Botanical Gardens	1	1	1	6
Tennis Courts		2	2	6
BMX Track		2	1	5
Skate Parks	1	1		5
Baseball Fields	1		1	4
Disc Golf		1	1	3
Volleyball Courts	1			3
Football Fields		1		2
Water Playscapes		1		2
Community Gardens			1	1
Basketball Courts				0

NOTE:

1. The text highlighted "blue" in the tables above designates indoor facilities.
2. Scoring is based on 3 points for 1st place, 2 points for 2nd place and 1 point for 3rd place.

Area E

Categories	1st	2nd	3rd	Total Score
Trails	6	6	3	33
Outdoor Pools	7	3	2	29
Picnic Areas	4	4	4	24
Playscapes / Playgrounds	5	2	2	21
Natural Areas and Open Space	4	1	3	17
Pavilions/Shelters	1	7	0	17
Senior Center	3	2	4	17
Fishing Access Areas	0	3	4	10
Multi-Purpose Indoor Center	1	1	5	10
Baseball Fields	2	1	0	8
Water Playscapes	0	3	2	8
Community Gardens	1	2	1	6
Disc Golf	2	0	0	6
Basketball Courts	0	1	3	5
Indoor Pools	0	2	1	5
Botanical Gardens	1	0	0	3
Dog Parks	1	0	0	3
Softball Fields	1	0	0	3
Tennis Courts	1	0	0	3
Skate Parks	0	0	2	2
Soccer Fields	0	1	0	2
BMX Track	0	0	1	1
Football Fields	0	0	0	0
Volleyball Courts	0	0	0	0

Area F

Categories	1st	2nd	3rd	Total Score
Senior Center	13	3	3	48
Trails	8	9	6	48
Outdoor Pools	8	2	2	30
Dog Parks	6	3	4	28
Natural Areas and Open Space	3	5	4	23
Indoor Pools		8	2	18
Playscapes / Playgrounds	3	2	4	17
Fishing Access Areas	2	2	4	14
Picnic Areas	1	3	2	11
Multi-Purpose Indoor Center	1	2	2	9
Soccer Fields	1	1	2	7
Softball Fields	1	1	1	6
Tennis Courts	2	0	0	6
Skate Parks	0	2	0	4
Water Playscapes	0	2	0	4
Community Gardens	0	1	1	3
Football Fields	1	0	0	3
Volleyball Courts	0	1	1	3
Basketball Courts	0	0	2	2
Botanical Gardens	0	0	1	1
Baseball Fields	0	0	0	0
BMX Track	0	0	0	0
Disc Golf	0	0	0	0
Pavilions/Shelters	0	0	0	0

NOTE:

1. The text highlighted "blue" in the tables above designates indoor facilities.
2. Scoring is based on 3 points for 1st place, 2 points for 2nd place and 1 point for 3rd place.

Neighborhood Park Amenities and Associated Range of Costs (Based on 3 acre park)	
Amenity	Associated Cost
Apparatus Area for Children's play* (3)	\$ 90,000
Family picnic tables* (10 Min.)	\$ 8,000
Game court areas (Basketball half court)	\$ 25,000
Turf playfield (2 acres)	\$ 30,000
Pavilion -20' x 20'* (2)	\$ 40,000
Perimeter Trail (1/4 mile min.; 6' wide)	\$ 64,000
Trash Receptacles (2 min.)	\$ 900
Park Benches* (8 min.)	\$ 4,000
Planting (Allowance)	\$ 10,000
Area Lighting (4 standards)	\$ 14,000
Subtotal	\$ 285,900
Misc. 20% contingency (grading/haul off/etc.)	\$ 57,180
Total	\$ 343,080
Design Fees 15-18% (estimated at 16.5%)	\$ 56,608
Total	\$ 399,688
Estimated development cost per acre	\$ 133,229.33
Notes:	
*Neighborhood Parks serve a 1/2 mile service radius or approximately 1,300 households; with a 2.69 LUE (Living Unit Equivalent) this equates to 3,497 residents that a neighborhood park services. The number of each amenity highlighted in parenthesis is determined by dividing 3,497 by the recommended facility guidelines for that particular amenity as shown on page 35	
Estimate does not include cost of land or utilities	
No restroom or parking costs are associated with the program for the Neighborhood Park.	

Community Park Amenities and Associated Range of Costs	
Amenity	Associated Cost
Baseball Fields (4 @ 300' Outfield Fences)	\$ 800,000
Lighting for Ball Fields (16 Lighting Standards)	\$ 400,000
Adult Soccer Fields (4 Total)	\$ 400,000
Lighting for Soccer Fields (12 Lighting Standards)	\$ 300,000
Parking for 400 Vehicles (50:1 parking: field)	\$ 1,000,000
Entry Drive (150 linear feet x 24' wide)	\$ 15,300
Electrical Infrastructure	\$ 50,000
Concession Restroom (2400 SF)	\$ 720,000
Perimeter Trail (1 mile min.; 6' wide DG)	\$ 110,880
Pavilions (4)	\$ 120,000
Playground	\$ 125,000
Basketball Court	\$ 60,000
Volleyball	\$ 15,000
Trash Receptacles (20 min.)	\$ 9,000
Park Benches* (16 min.)	\$ 8,000
Planting (Allowance)	\$ 30,000
Area Lighting (12 standards)	\$ 42,000
Demolition and Site Preparation	\$ 96,000
On Site Wet Utilities	\$ 70,000
On Site Dry Utilities	\$ 42,000
Misc. Concrete	\$ 42,000
Subtotal	\$ 4,455,180
Misc. 20% contingency (grading/haul off/etc.)	\$ 891,036
Total without design fees	\$ 5,346,216
Design Fees 15-18% (estimated at 16%)	\$ 855,400
Total	\$ 6,201,616
Estimated development cost per acre (Based on 50 acre parks)	\$ 124,032
NOTES: This is an opinion of probable cost and is for budget purposes only.	
1. No underground storm drainage is estimated in this Opinion of costs	
2. This Opinion of Costs does not include consultants design costs (including design/survey/environmental explorations/permitting); these fees usually run from 15-17% of "Total Contractor Cost"	
3. Offsite utility costs are not included in this estimate of probable costs	
4. Purchase of land for a proposed community park is not included in this estimate of probable costs.	